

INDEX

INTRO	.1
OMNICHROMA	.2-5
PALFIQUE ASTERIA	.6-9
ESTELITE SIGMA	.10-11
PALFIQUE LX5	.12-13
ESTELITE ALPHA	.14-15
PALFIQUE BULK FLOW	.16-19
PALFIQUE U FLOW	.20-23
PALFIQUE BOND SE	.24-25
PALFIQUE U BOND SC	.26-29
SHIELD FORCE PLUS	.30-32
ESTECM PLUS	.33-34
ESTELITE POSTERIOR	.35-36
TOKUSO GIC T1	.37-40
REBASE II	.41-49
SOFTLINER TOUGH	.50-52

PALFIQUE omniCHROMA®

Every shade. One choice.



**Unprecedented Color Matching
with ONE SHADE Composite**

 Tokuyama Dental
● ● ● ● ●

2 / 52

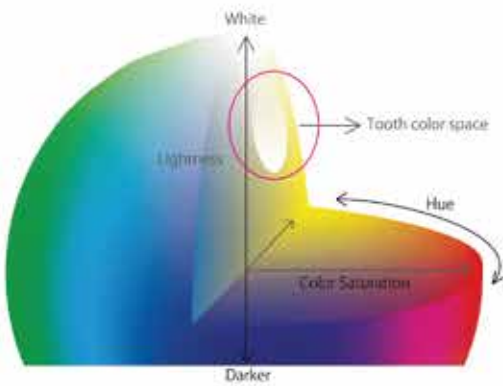
PALFIQUE
omniCHROMA®

PALFIQUE OMNICHROMA is the world's first universal composite that esthetically matches almost all patients with a single shade. Its uniformly sized supra-nano spherical fillers allow PALFIQUE OMNICHROMA to match every shade, a science that we call Smart Chromatic Technology. Its wide color-matching ability eliminates the shade-taking procedure, reducing composite inventory and saving doctors time and money.

Technical Background

TOOTH COLOR

All smiles have something in common, and that is the colors that make up human teeth shades. All shades of teeth express a narrow range of red-to-yellow color. The Munsell Sphere on the right demonstrates the color range of teeth. To match every smile, most composite brands require multiple shades. That's because most composites today depend on the color of red and yellow dyes added to the resin material to emulate tooth shades. This means that dentists must keep a large inventory of different composites to accommodate a variety of patients.

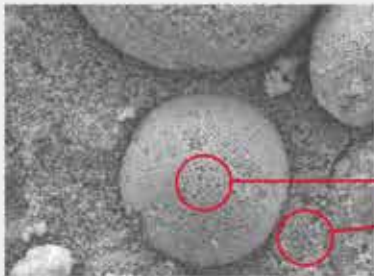


Munsel Sphere

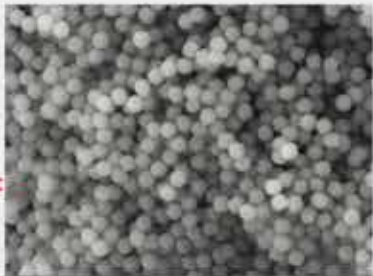
SMART CHROMATIC TECHONOLGY

PALFIQUE OMNICHROMA exhibits the ultimate wide-range color-matching ability thanks to Tokuyama's Smart Chromatic Technology. The Smart Chromatic Technology is achieved by Tokuyama's uniformly sized 260nm spherical fillers included in PALFIQUE OMNICHROMA. Structural color occurs when different wavelengths of light are amplified or weakened by the structure of a material itself, expressing colors other than what the material may actually be.

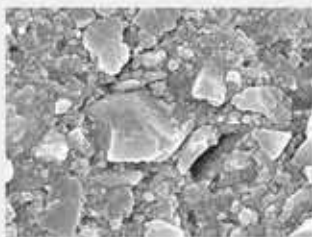
Tokuyama's Uniformly sized spherical fillers



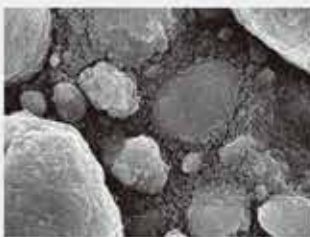
SEM Image of PALFIQUE OMNICHROMA at 5,000x Magnification



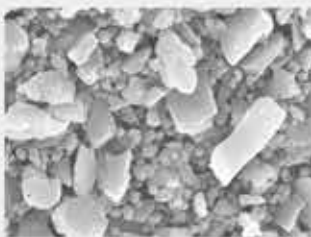
SEM Image of PALFIQUE OMNICHROMA at 20,000x Magnification



Herculite™ Ultra



Filtek™ Supreme Ultra

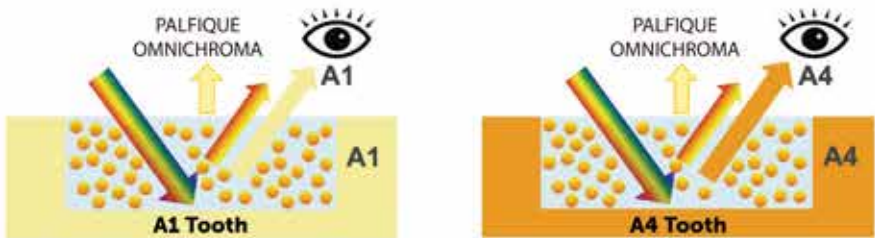


Tetric EvoCeram®



TPH Spectra® ST

PALFIQUE OMNICHROMA utilizes structural color with its 260nm spherical fillers. The fillers are the exact size and shape needed to generate red-to-yellow color as ambient light passes through the composite, without the need of added pigments or dyes. This red-to-yellow color generated by the spherical fillers combines with the reflected color of the patient's surrounding dentition, creating the perfect match for almost every shade.



Excellent color match
Restored using PALFIQUE OMNICHROMA

FEATURES & BENEFITS

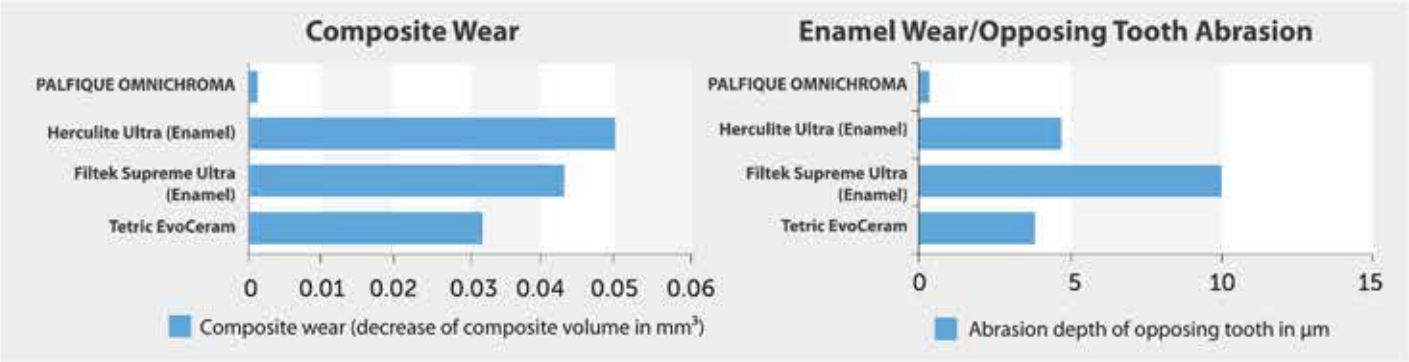
- Unprecedented shade-matching ability and esthetics
- Minimized chair time and reliance on shade-matching procedures
- Exceptional handling, polishability, and strength
- Reduction of inventory of necessary composite shades
- Reduction of expired composite



CHARACTERISTICS

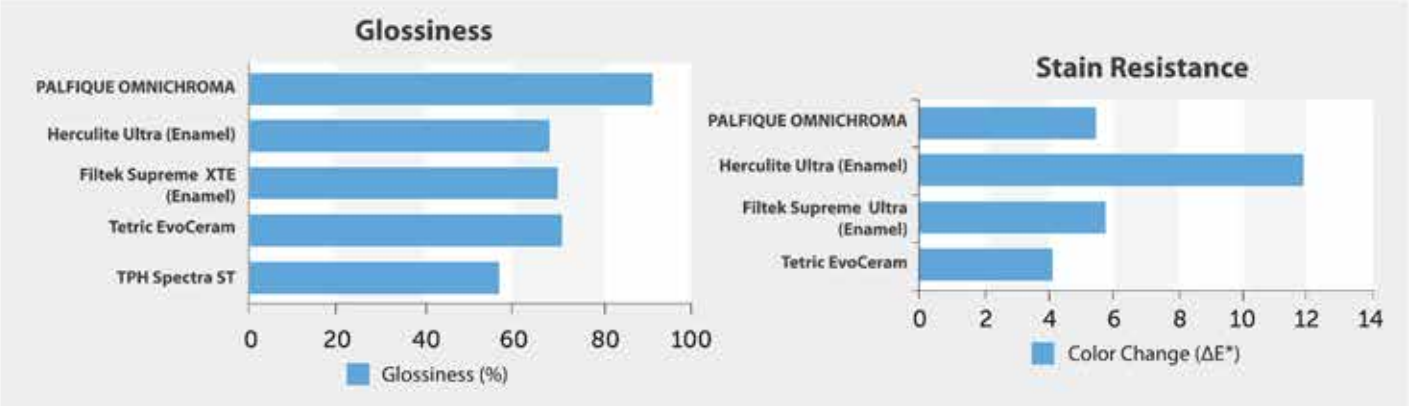
Minimal Wear

PALFIQUE OMNICHROMA excels in minimizing wear in both the composite itself and in abrading opposing dentition, resulting in long-lasting restorations.



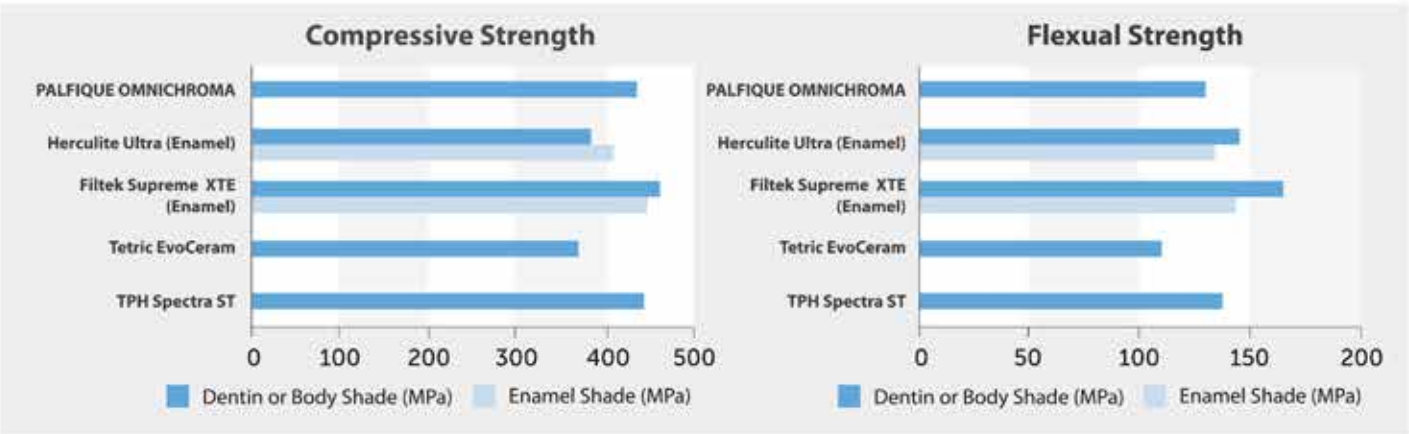
Esthetics

PALFIQUE OMNICHROMA produces extremely glossy results and maintains its cured color very well, resisting the effects of staining on its appearance.



High Strength


PALFIQUE OMNICHROMA's compressive and flexural strength is equal to or exceeds other commercially available composites, assuring dentists that patients can bite with confidence.




CLINICAL PROCEDURE

PALFIQUE OMNICHROMA


POSTERIOR




Preparation: Add chamfers to help eliminate margin visibility and aid shade matching.




Apply bonding agent.



Fill with PALFIQUE OMNICHROMA.




Light cure. (Curing time varies depending on intensity of curing light.)




Finish and polish.

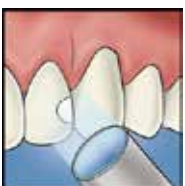
ANTERIOR




Preparation: Add bevels to help eliminate margin visibility and aid shade matching.



Apply bonding agent and fill PALFIQUE OMNICHROMA.



Light cure. (Curing time varies depending on intensity of curing light.)



Finish and polish.




Note: PALFIQUE OMNICHROMA appears opaque-white before curing, allowing for higher visibility and easier placement. It becomes the perfect match to the surrounding tooth after curing.

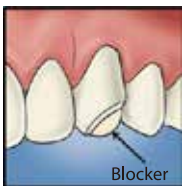
	A1	A2	A3	A3.5	A4	B1	B2	B3	B4	C1	C2	C3	C4	D2	D3	D4
Before Light Curing																
After Light Curing																

PALFIQUE OMNICHROMA BLOCKER

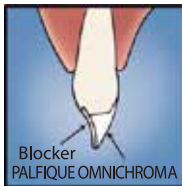
PALFIQUE OMNICHROMA BLOCKER is used as a lingual layer for large Class III or Class IV restorations with limited surrounding dentition. After applying and curing PALFIQUE OMNICHROMA BLOCKER, PALFIQUE OMNICHROMA is applied as the second layer. PALFIQUE OMNICHROMA BLOCKER can also be used to mask slight staining, or to reconstruct a highly opaque tooth.




Preparation and apply bonding: Add chamfers or bevels to help eliminate margins and aid shade matching.




Apply BLOCKER as a lingual layer. Thickness of the lingual layer can vary, but 0.5mm is illustrated as a guide. Light cure*.



Apply PALFIQUE OMNICHROMA as a secondary layer.



Note that PALFIQUE OMNICHROMA is opaque white before curing. It blends naturally after curing.



Light cure*, finish, and polish



Read all instructions, information, precautions, and notes in IFU before use.

*Curing time varies depending on intensity of curing light.

AVAILABLE PRODUCTS

PALFIQUE OMNICHROMA

Contents: 1 - 4g (2.2mL) syringe



PALFIQUE OMNICHROMA BLOCKER

Contents: 1 - 4g (2.1mL) syringe



Specifications are subject to change without obligation on the part of the Manufacturer.

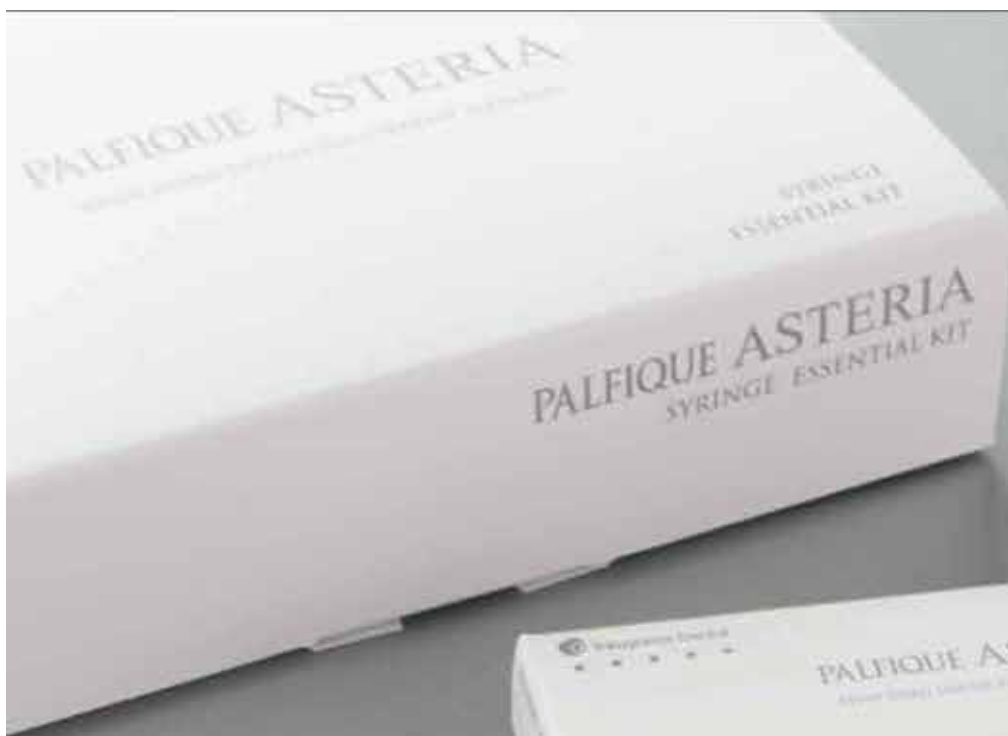
Manufactured by

Tokuyama Dental Corporation

38-9, Taitou 1-chome, Taitou-ku, Tokyo, Japan

TEL: +81-3-3835-2261 FAX: +81-3-3835-2265

URL: www.tokuyama-dental.com



PALFIQUE ASTERIA

SIMPLY AESTHETIC

PALFIQUE ASTERIA universal composite system is focused on simplified restorative therapy and outstanding aesthetic results.

● INVISIBLE MARGINS

PALFIQUE ASTERIA introduces a new simplified 2-step layering concept. This comprehensive system is comprised of minimal shades; just 7 Body shades and 5 Enamel shades cover the entire dental shade range.

BODY Shades

The Body shades have excellent blending ability with less width of margin bevel thanks to their state-of-the-art optical properties. The Body shades provide some translucency with sufficient opacity to avoid shining through without the use of opaque or dentin shades.

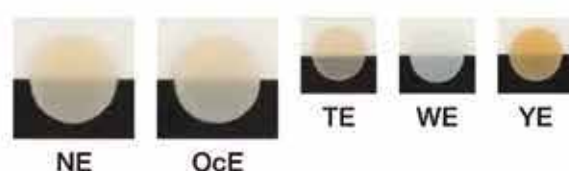
A1B-A4B shades blend with most natural dentition. The supplemental Body shade BL is recommended for high value bleached teeth and B3B is for yellowish teeth.



Case courtesy of Dr. Noboru Takahashi

ENAMEL Shades

The Enamel shades have compatible translucency as a substitute for natural enamel. The primary use of NE shade is for the anterior teeth and OcE is for the posterior occlusal area. The supplemental Body shade TE is for highly translucent anterior teeth, WE is for whitish enamel and YE is for discolored orangish enamel.



Case courtesy of Dr. Noboru Takahashi

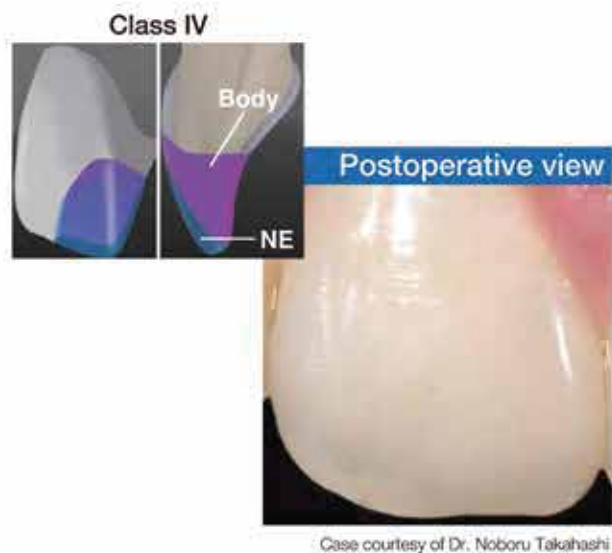
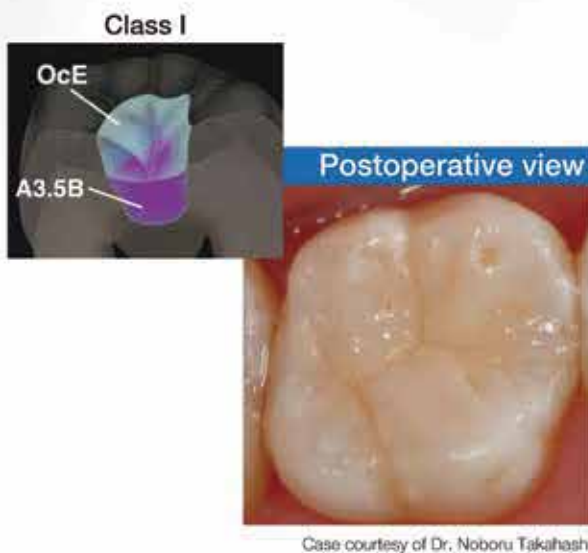
Benefits

- **Outstanding Aesthetics**
Invisible Margins
Superior & Long Lasting Gloss Retention
- **Simplified Layering**
- **Optimal Handling**
Non-Stick & Easy to Sculpt
Ample Working Time
(90sec. under ambient light (10,000 lux))



● SIMPLIFIED LAYERING

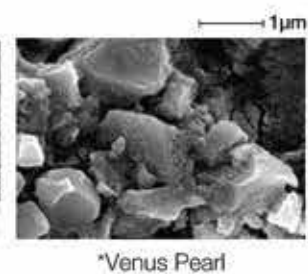
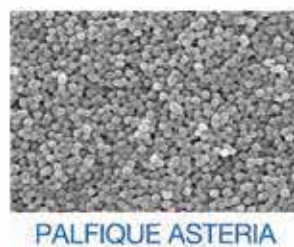
2-STEP LAYERING CONCEPT



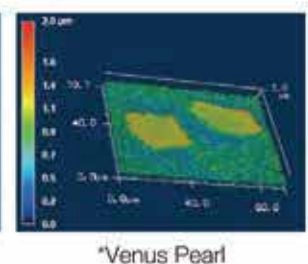
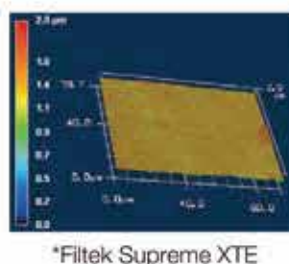
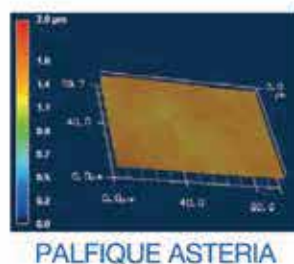
● SUPERIOR & LONG LASTING GLOSS

The Supra-Nano Spherical filler in PALFIQUE ASTERIA facilitates a very smooth surface with superior gloss that is easily obtained with polishing and is sustained long term.

Filler SEM Images

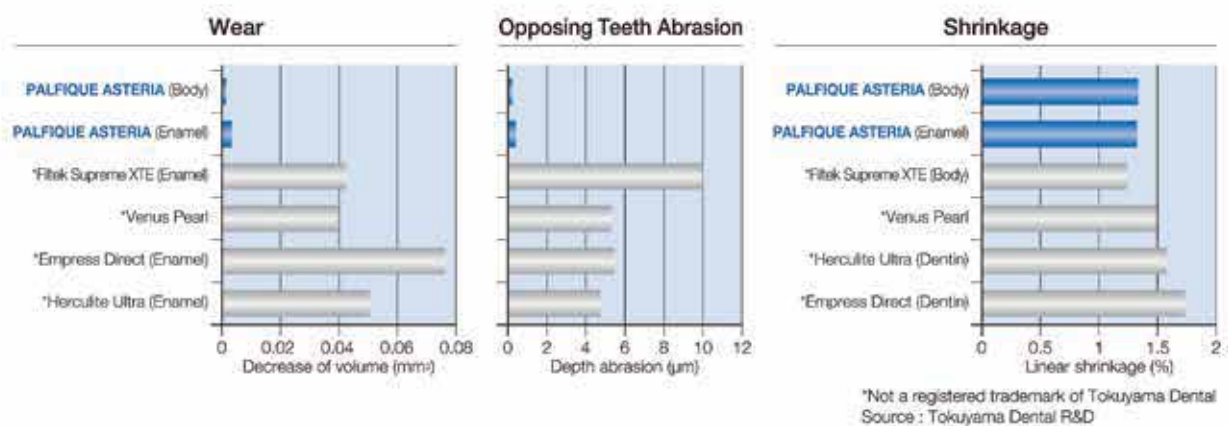


Gloss Retention (Thermal cycle 10,000 times)



*Not a registered trademark of Tokuyama Dental
Source: Tokuyama Dental R&D

● EXCELLENT PHYSICAL PROPERTIES



● PRODUCT PACKAGES AVAILABLE



PALFIQUE ASTERIA SYRINGE ESSENTIAL KIT

Contents 7 Syringes (2.1mL (4.0g) each)
Body; A1B, A2B, A3B, A3.5B, A4B
Enamel; NE, OcE
Clinical Guide



PALFIQUE ASTERIA SYRINGE Refill

Contents 1 Syringe (2.1mL (4.0g))
Available shades: Body A1B, A2B, A3B, A3.5B, A4B, B3B, BL
Enamel NE, OcE, WE, YE, TE



PALFIQUE ASTERIA CUSTOM SHADE GUIDE

Contents 15 Shade Guide Handles, Mold, Holder

Custom Shade Guide allows you to build and personalize according to your own preferences.
Customize your palette and create the exact shade of your composite.

ESTELITE COLOR KIT (Light-cured Characterizing Material)

Contents 13 Syringes (0.5mL (0.9g) each)
15 Syringe Tips and Caps, 5 Disposable Dishes
1 Light Shield Cover.

ESTELITE COLOR Refill

Contents 1 Syringe (0.5mL (0.9g))
2 Syringe tips and caps
Available shades Clear, White, Blue, Yellow, Gray, Ochre, Dark Brown, Red, Lavender, Pink Opaque, High Chroma Opaque, Medium Chroma Opaque, Low Chroma Opaque

Brush No.24

Contents 5 Double-Ended Brushes

Resin-based Dental Restorative Material

ESTELITE Σ QUICK

QUICK-CURE

Utilizing Tokuyama's patented innovative initiator system "Radical Amplified Photopolymerization Technology" (RAP), Estelite Σ Quick offers reduced curing time and excellent stability to ambient light while maintaining the superior esthetic and physical properties of Estelite Σ .



Benefits

- Quick curing time - 10 sec. with a halogen light ($\geq 400\text{mW}/\text{cm}^2$)
- Extended working time - 90 sec. under ambient light (10,000 lx)
- Outstanding polishability
- High gloss retention over time
- Wide shade matching range (chameleon effect)
- High wear resistance
- Less wear to opposing teeth
- Low shrinkage
- Good radiopacity
- Available in 20 shades



Indications

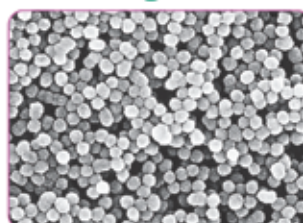
- Anterior and posterior restorations
- Composite veneer
- Diastema closure
- Composite/porcelain repair

Diastema Closure

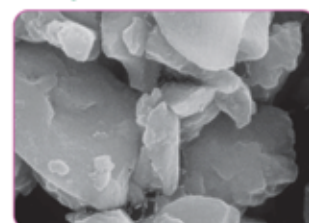


Case courtesy of Toshio Kanamura, DDS

SEM Images of Filler Shape

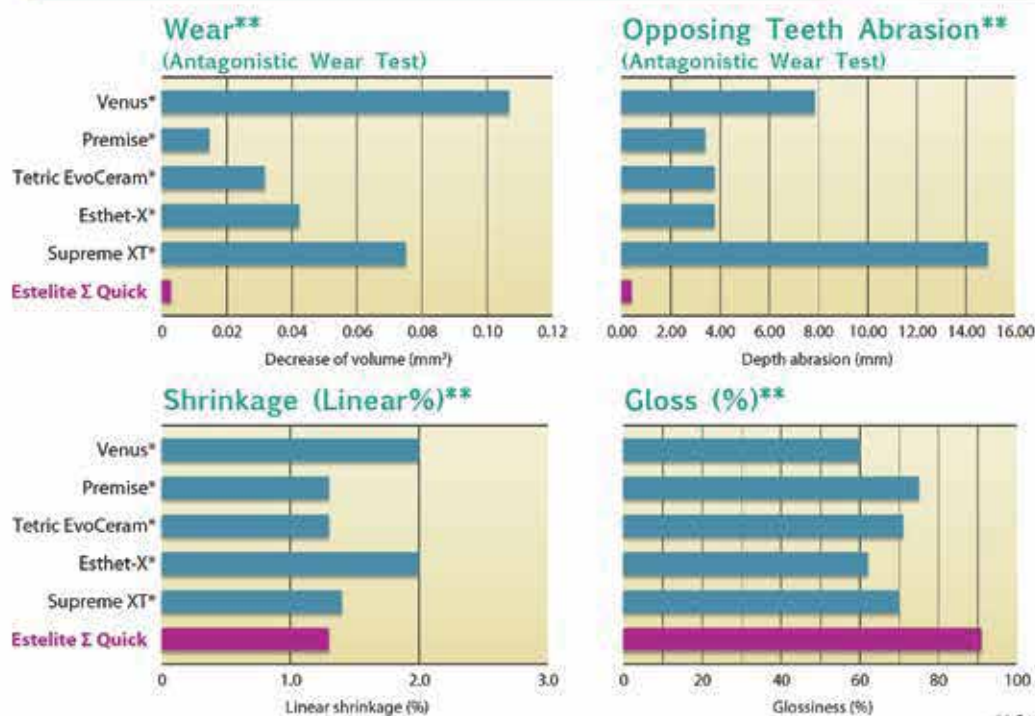


Estelite Σ Quick



Esthet-X*

Excellent Physical Properties



Good Radiopacity



Optimal Handling



** Source: Tokuyama Dental R&D

* Not a registered trademark of Tokuyama Dental

Product Packages Available



Estelite Σ Quick Syringe System Kit

ESTELITE Σ QUICK Kit

Estelite Σ Quick Syringe System Kit

Contents: 1 syringe (3.8g) of each shade: A1, A2, A3, A3.5, OA3, OPA2;
1 syringe Estelite Flow Quick (1.8g) of each shade: A2, A3, OA3, 27 tips
1 bottle Bond Force (5ml), 1 dispensing well, 50 applicators; shade guide

Estelite Σ Quick 3 Syringe Kit

Contents: 1 syringe (3.8g) of each shade: A2, A3, OA3

Estelite Σ Quick PLT Intro Kit

Contents: 10 PLTs (0.2g each) of each shade: A2, A3;
5 PLTs (0.2g each) of each shade: A1, A3.5, OA3, OPA2;
1 bottle Bond Force (1ml), 1 dispensing well, 25 applicators; shade guide

Estelite Σ Quick PLT Mini Kit

Contents: 5 PLTs (0.2g each) of each shade: A1, A2, A3, OA2



ESTELITE Σ QUICK Refill

Estelite Σ Quick Syringe Refill

Contents: 1 syringe (3.8g)
Available shades: A1, A2, A3, A3.5 A4, A5, B1, B2, B3, B4, C1, C2, C3, OA1, OA2, OA3, OPA2, BW (Bleach White), WE (White Enamel), CE (Clear Enamel)

Estelite Σ Quick PLT Refill

Contents: 20 PLTs (0.2g each)
Available shades: A1, A2, A3, A3.5 A4, A5, B1, B2, B3, B4, C1, C2, C3, OA1, OA2, OA3, OPA2, BW (Bleach White), WE (White Enamel), CE (Clear Enamel)



LUXURY RESTORATIONS

Introducing the next generation *ESTELITE Sigma Quick...* PALFIQUE LX5. Delivering lifelike aesthetic restorations, infused with our Supra-Nano spherical fillers, that was engineered by Tokuyama Dental. Tokuyama Dental's composite resin is recognized world-wide, and features outstanding polishability, wide shade matching range and high wear resistance. PALFIQUE LX5 can meet everything in your practice.

RESIN-BASED DENTAL RESTORATIVE MATERIAL

PALFIQUE LX5



BENEFITS

- Quick curing time - 10 sec. with a halogen light ($\geq 400\text{mW/cm}^2$)
- Extended working time - 90 sec. under ambient light (10,000 lx)
- Outstanding polishability
- High gloss retention over time
- Wide shade matching range (chameleon effect)
- High wear resistance
- Less wear to opposing teeth
- Low shrinkage
- Good radiopacity
- Available in 20 shades

CLINICAL CASES

CLASS II



Before



After

Case courtesy of Hirofumi Tashiro, D.D.S., Ph.D.

CLASS IV



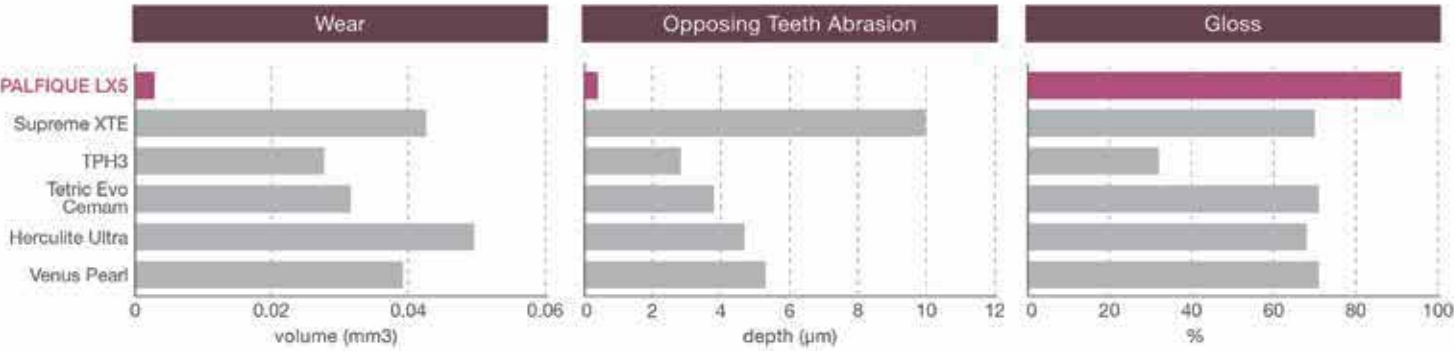
Before



After

Case courtesy of Tomohiro Takagaki, D.D.S., Ph.D.

EXCELLENT PHYSICAL PROPERTIES

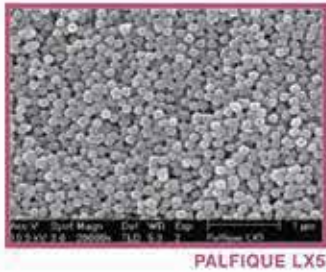


** Source: Tokuyama Dental R&D
* Not a registered trademark of Tokuyama Dental

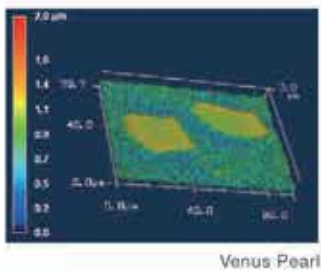
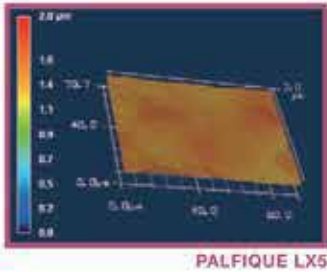
SUPERIOR & LONG LASTING GLOSS

The Supra-Nano Spherical fillers in PALFIQUE LX5 provide a very smooth surface for a superior shine, and high gloss retention.

FILLER SEM IMAGES



GLOSS RETENTION



PRODUCT PACKAGES AVAILABLE

PALFIQUE LX5 Kit

PALFIQUE LX5 SYRINGE SYSTEM KIT

Contents: 1 syringe (3.8g) of each shade: A1, A2, A3, A3.5, OA3, OPA2;
1 syringe Estelite Flow Quick (1.8g) of each shade: A2, A3, OA3, 27 tips
1 bottle Bond Force (5ml), 1 dispensing well, 50 applicators; shade guide

PALFIQUE LX5 3 SYRINGE KIT

Contents: 1 syringe (3.8g) of each shade: A2, A3, OA3

PALFIQUE LX5 Refill

PALFIQUE LX5 SYRINGE REFILL

Contents: 1 syringe (3.8g)
Available shades: A1, A2, A3, A3.5 A4, A5, B1, B2, B3, B4, C1, C2, C3,OA1, OA2, OA3, OPA2, BW (Bleach White), WE (White Enamel), CE (Clear Enamel)

PALFIQUE LX5 PLT REFILL

Contents: 20 PLTs (0.2g each)
Available shades: A1, A2, A3, A3.5 A4, A5, B1, B2, B3, B4, C1, C2, C3, OA1, OA2,OA3, OPA2, BW (Bleach White), WE (White Enamel),CE (Clear Enamel)



ESTELITE α

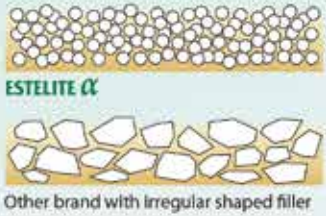
Simplified Aesthetic Restoratives



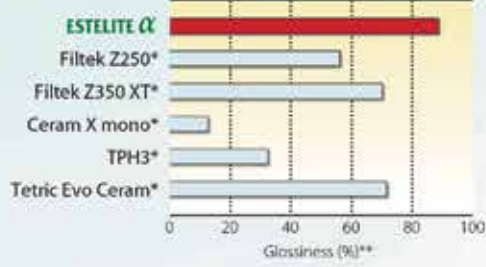
Superior & Long Lasting Gloss

Thanks to Supra Nano Spherical Filler, very smooth surface having superior gloss can be obtained after easy polish and sustained for long term same as natural teeth.

SURFACE (IMAGE)

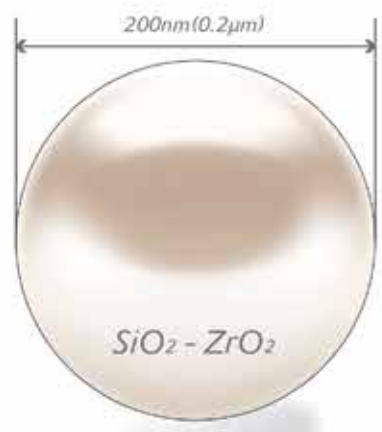


Glossiness



Supra Nano Spherical Filler

Silica-zirconia fillers produced by Sol-Gel Method have controlled size (0.2 μ m), multiple refractive indices and rounded shape like a pearl. **ESTELITE α** contains over 30 billion pieces of Supra Nano Spherical Filler in one syringe.



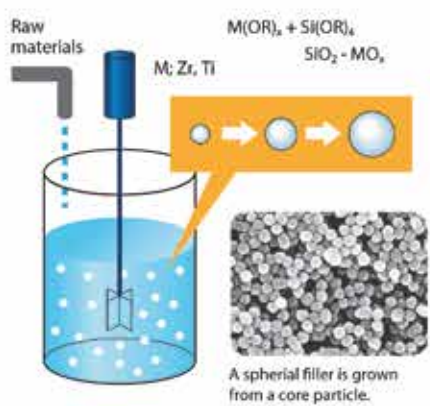
Excellent Color Match

With only 4 basic shades (A1, A2, A3, A3.5) and 2 opalescent shades (OA2, OA3), most cases can be recreated very naturally, blending with surrounded teeth. This excellent color match features can be offered by filler and monomer which have controlled, multiple refractive indices.



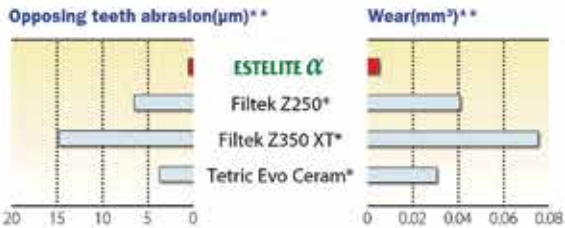
Case courtesy of Dr. Sueo Saitou

Sol-Gel Method



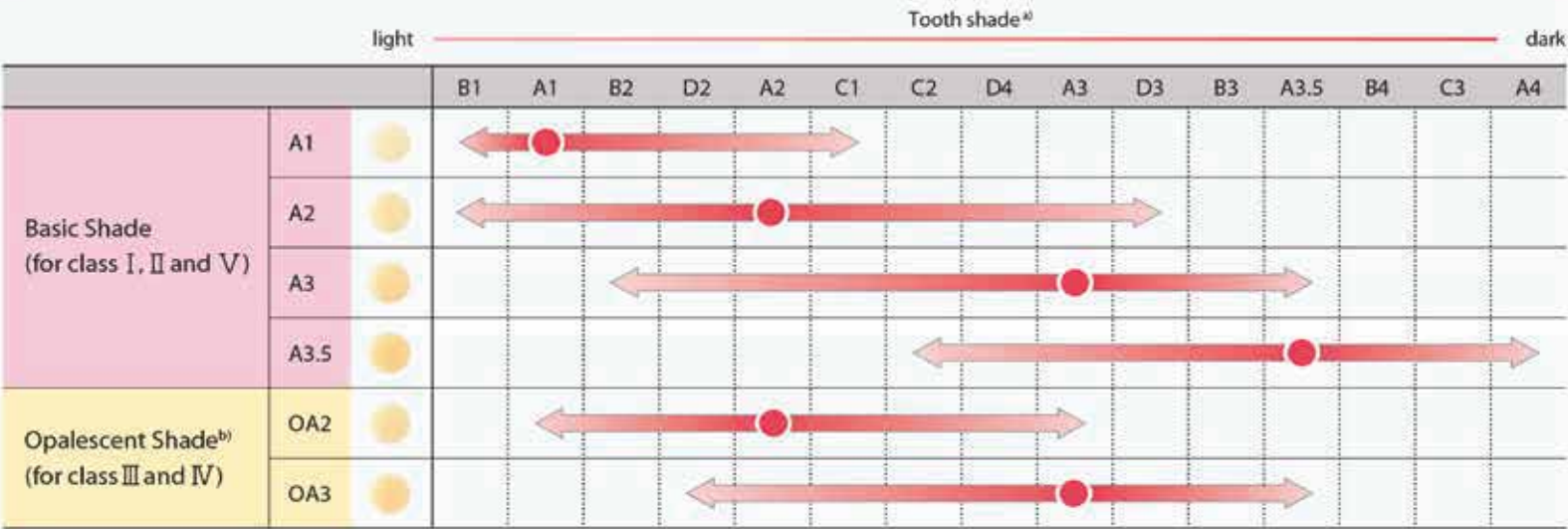
Ideal Wear Properties

Despite its excellent wear-resistance, **ESTELITE α** does not cause wear in the opposing teeth due to innumerable Supra Nano Spherical Fillers contained in the paste.

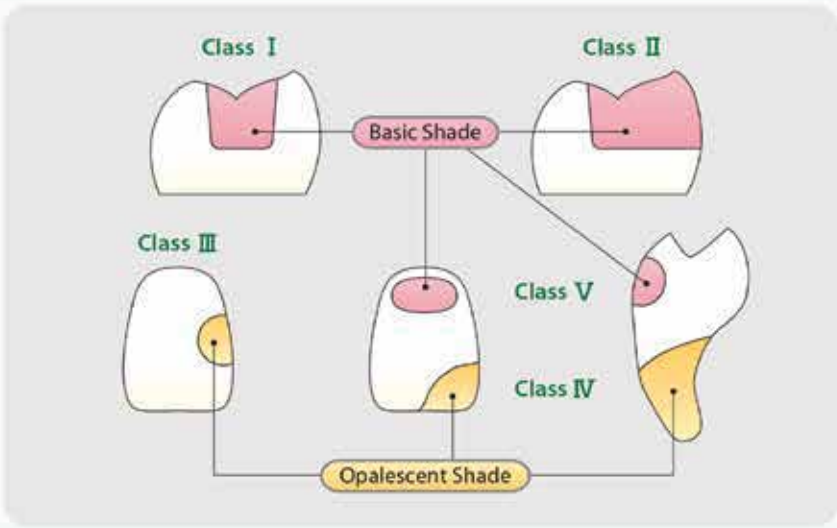


* Not a registered trademark of Tokuyama Dental ** Source: Tokuyama Dental R&D

SIMPLIFIED SHADE TAKING



a) Above tooth shades are selected according to the VITA Shade Guide, VITA is a registered trademark of VITA Zahnfabrik H. Rauter GmbH & Co.KG.
b) Opalescent shades(OA2, OA3) are slightly more opacous than other A shades, which are suitable to prevent appearance from becoming grayish in class III and class IV restorations



PHYSICAL PROPERTIES

Flexural Strength (MPa)	115
Flexural Modulus (GPa)	9.8
Compressive Strength (MPa)	368
Shrinkage (%)	1.3
Radiopacity (%Al)	190

Source: Tokuyama Dental R&D

PRODUCT PACKAGES AVAILABLE



ESTELITE ^{Alpha} Syringe Kit

Contents: 2 syringes (3.8g) of A2;
1 syringe (3.8g) of each shade: A3, OA2;



ESTELITE ^{Alpha} REFILL

Contents: 1 syringe (3.8g)
Available shades: A1, A2, A3, A3.5, B2, C2, OA2, OA3, Inc.



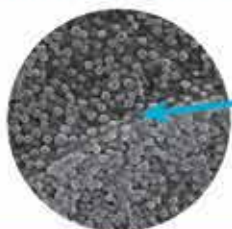
Simplified and Advanced Esthetic Bulk Composite.

- Simple
- High Esthetics
- Reliable



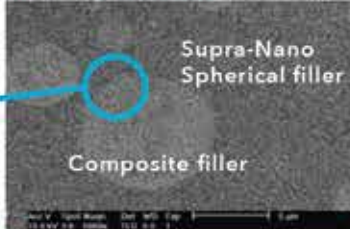
Key Technology

Spherical and Round shape filler



Supra-Nano Spherical filler

- Good polishability
- Superior long-lasting gloss



Supra-Nano Spherical filler

Composite filler

Round composite filler

- Stress relief
- Prepolymerized by Supra-Nano Spherical filler and monomer

The spherical fillers of the Supra-Nano particles and the round shape of the composite fillers used in PALFIQUE BULK FLOW provide an uniform diffusion of light, allowing for a more forgiving shade match and superb blend to surrounding teeth. In addition, the spherical and round fillers provide low composite wear over time and safe for opposing dentition while causing less wear on opposing teeth.

RAP Technology

The catalyst technology adopted for PALFIQUE Bulk FLOW is the **Radical Amplified Photo polymerization initiator (RAP technology)**. As a major feature, the initiator balances the high polymerization activity needed to cure the resin with short exposure times (1/3 of that required by conventional products) and stability in ambient lighting.

Simple

PALFIQUE BULK FLOW is different from the traditional 2mm incremental technique and commercial bulk fill flowable composites requiring a universal cap. With PALFIQUE BULK FLOW, ONLY one layer up to 4mm is required to complete a restoration. A quick curing time and easy polishing also make the procedure shorter and simpler without sacrificing esthetics.

Simple Filling



PALFIQUE BULK FLOW
ONLY One layer

- ▶ No incremental placement
- ▶ No capping layer required
- ▶ Single fill up to 4mm

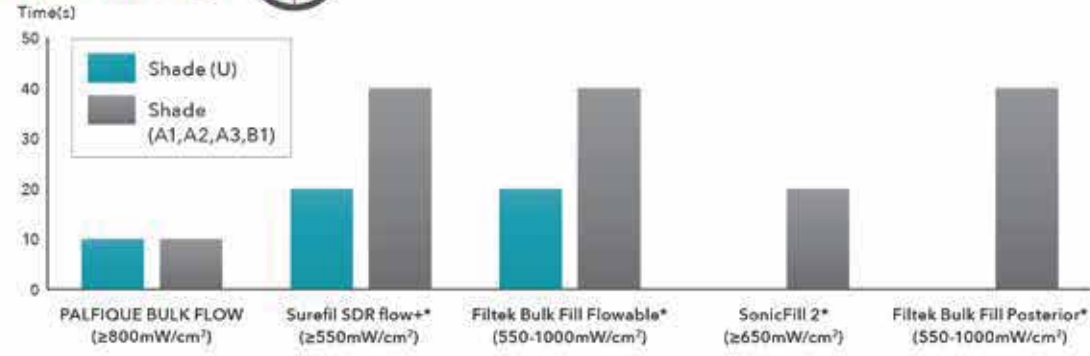


Incremental technique



Bulk fill flowable with universal cap

Quick Curing

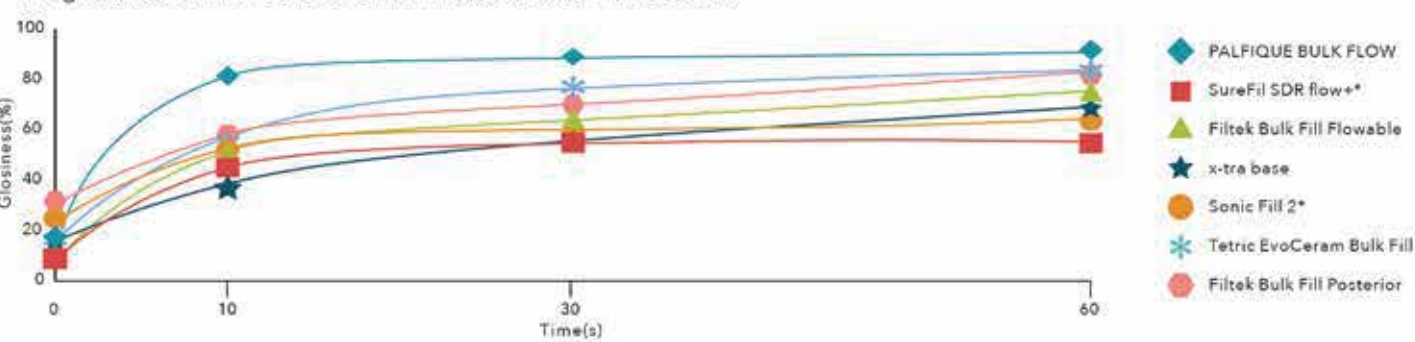


PALFIQUE BULK FLOW offers the clinician a reduced curing time without decreasing the working time by utilizing Tokuyama's innovative initiator system "Radical Amplified Photopolymerization (RAP) Technology".

Easy Polishing



The glossiness of PALFIQUE BULK FLOW exceeds 80% in 10 seconds.



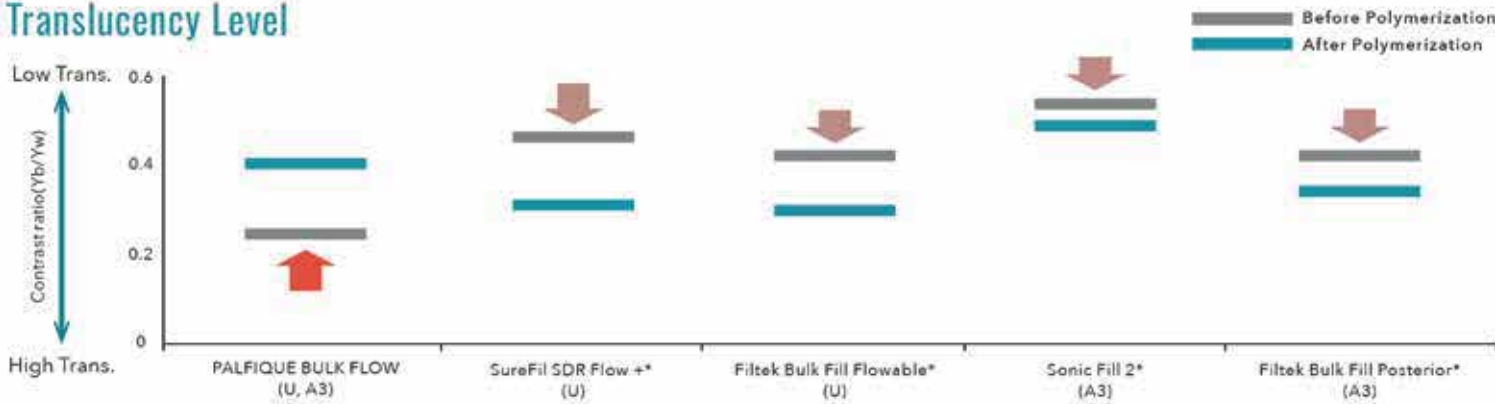
Glossiness measured by polishing in 60 seconds with 3M Super Fine.

High Esthetics



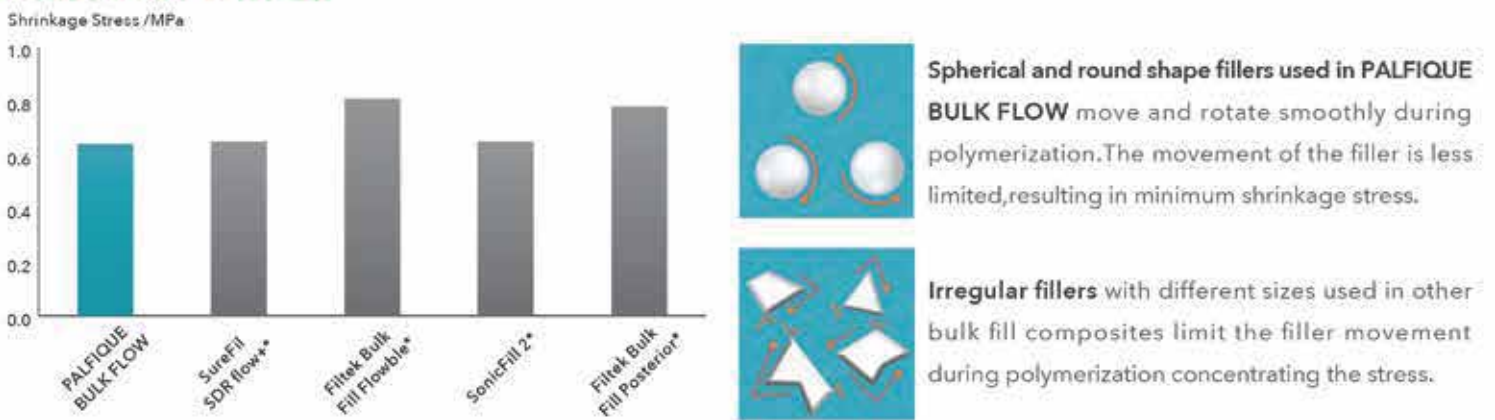
PALFIQUE BULK FLOW shows the highest translucency, which helps light reach the bottom of the restoration and ensure proper curing. PALFIQUE BULK FLOW becomes more opaque than other bulk fill composites when cured, helping the restoration look more natural.

Translucency Level



Reliable 1

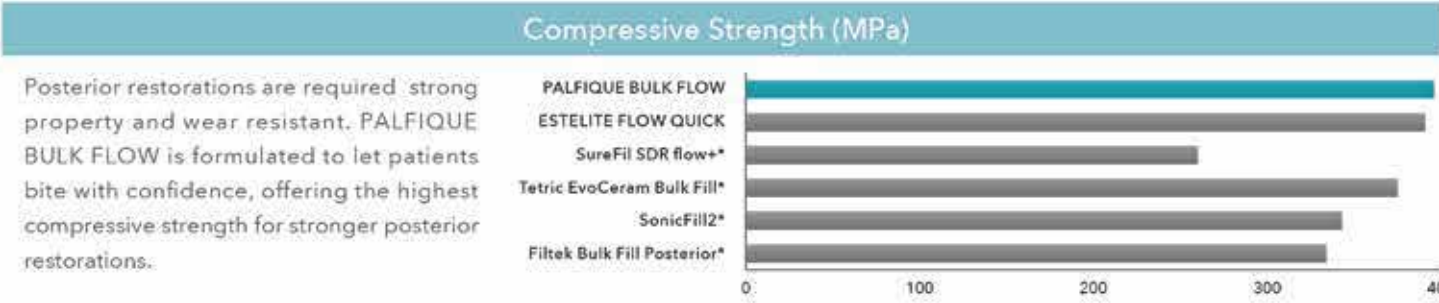
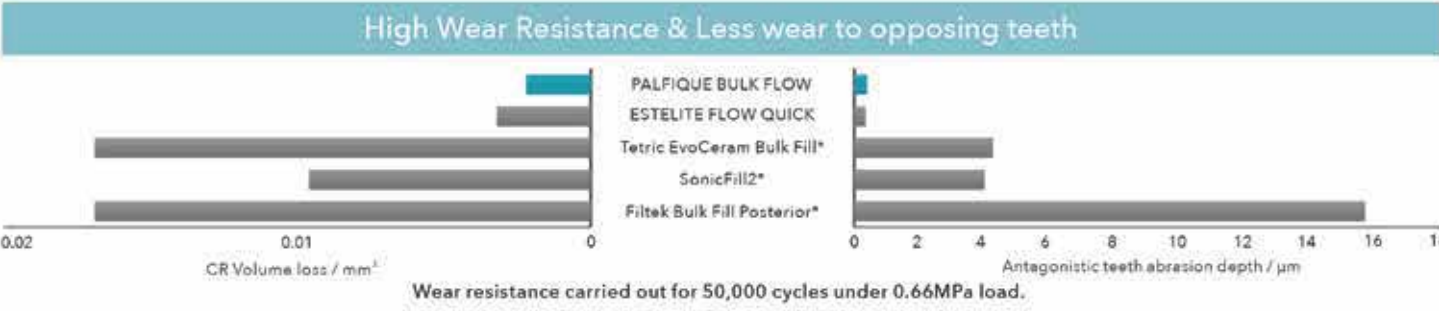
Low Shrinkage Stress



Good Cavity Adaptation



Reliable2

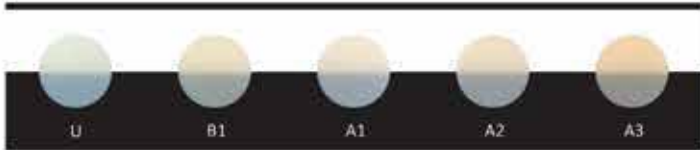


Product Packages Available



PALFIQUE BULK FLOW Syringe Refills

Contents: 1 syringe (3.0g)
Available in 5 shades: A1, A2, A3, B1, U



Accessory

TOKUYAMA Dispensing Tip

Contents: Dispensing Tip x 50

PALFIQUE UNIVERSAL FLOW

RESIN-BASED DENTAL RESTORATIVE MATERIAL



Excellent esthetics

Wide and natural color matching

PALFIQUE UNIVERSAL FLOW is basically designed to make it possible that most cases can be restored by limited mono shade thorough its excellent shade matching/color blending effect.

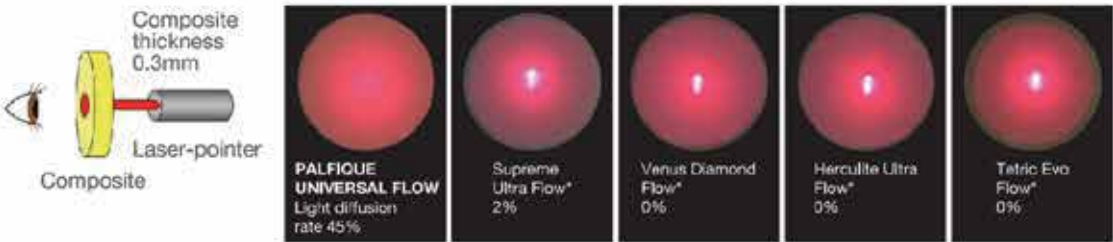


The color compatibility of PALFIQUE UNIVERSAL FLOW A2 shade when it is filled in each artificial tooth (B1, A1, B2, A2, C1, A3) after creating a cavity 4 mm in diameter and 2 mm deep. By using black light, we can see the fluorescence of PALFIQUE UNIVERSAL FLOW where it was filled.



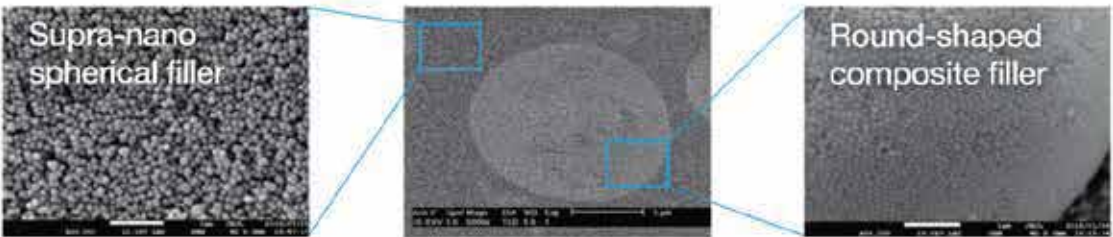
High Light Diffusion

PALFIQUE UNIVERSAL FLOW has the highest light diffusion by laser-transmission test. It can be possible in clinical to achieve wide color matching and the invisible margin.



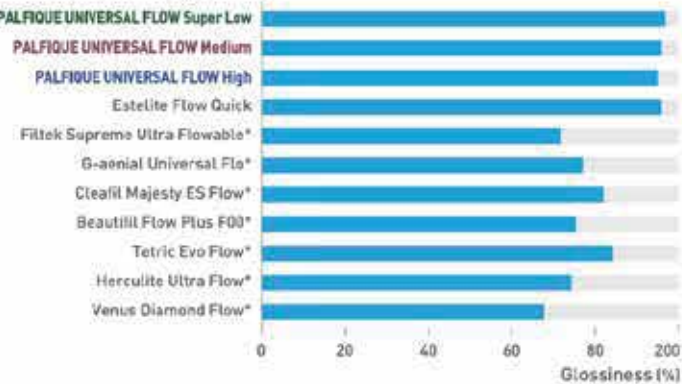
Filler components

Supra-nano spherical filler (200nm, silica-zirconia filler) and round shaped composite filler (include supra-nano spherical filler) are used as filler of PALFIQUE UNIVERSAL FLOW. The adoption of both filler can be contributes to the esthetic properties (wide color matching, excellent polishability) and the handling properties (easy extrusion, non-sticky).



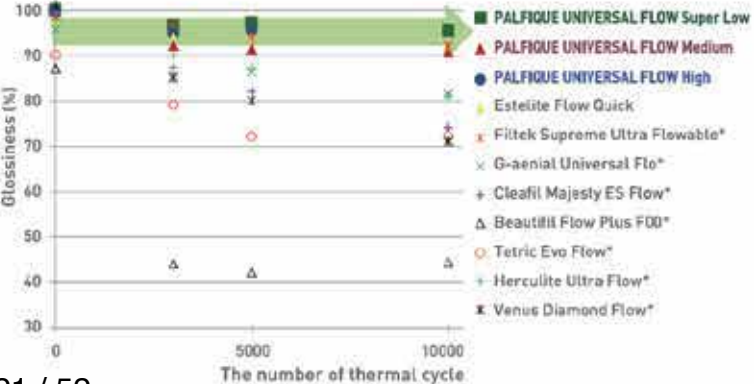
Polishability

Glossiness measured by polishing in 60 seconds with Sof-Lex™ Superfine.



Gloss retention

Thermal cycle test (5°C/55°C)

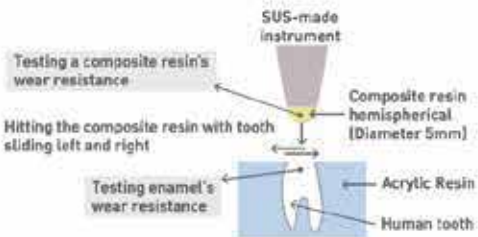


* Not a registered trademark of Tokuyama Dental Corporation

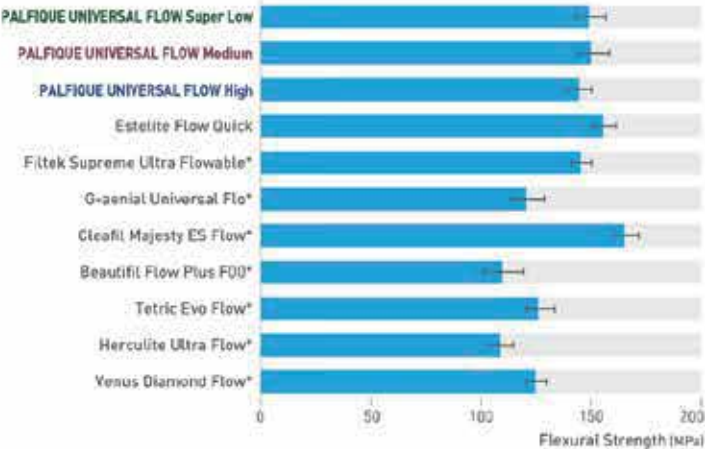
Three flowability options and excellent handling

Super Low	Medium	High
 <p>Non slumping Non running Precision stacking</p>	 <p>High versatility Less slumping Less running</p>	 <p>Easy placement Flow well</p>
Flowability	Flowability	Flowability
 <p>Horizontal #1 Vertical #2</p>	 <p>Horizontal #1 Vertical #2</p>	 <p>Horizontal #1 Vertical #2</p>
Recommended Cavities	Recommended Cavities	Recommended Cavities
 <p>Class I Class II Class III Class IV</p>	 <p>Class I Class II Class III Class IV Incisal Margin Deep Class V Wedge-shaped defects Shallow Class V Small Cavity</p>	 <p>Shallow Class V Small Cavity Cavity Liner</p>
<p>Dr.Miyazaki</p>  <p>Preparation</p>  <p>Placement of PALFQUE UNIVERSAL FLOW (Super Low A2)</p>  <p>Final Restoration</p>	<p>Dr.Tashiro</p>  <p>Preoperation</p>  <p>Placement of PALFQUE UNIVERSAL FLOW (High OPA2 + Medium CE)</p>  <p>Final Restoration</p>	<p>Dr.Miyazaki</p>  <p>Preoperation</p>  <p>Placement of PALFQUE UNIVERSAL FLOW (High OPA2 + Medium CE)</p>  <p>Final Restoration</p>
6 shades	12 shades	7 shades
 <p>A1 A2 A3 A2.5 A4 A5</p>	 <p>CE BW A1 A2 A3 A3.5 A4 A5 B2 OPA2 OPA3 OPA4</p>	 <p>A1 A2 A3 A3.5 OPA2 OPA3 OPA4</p>

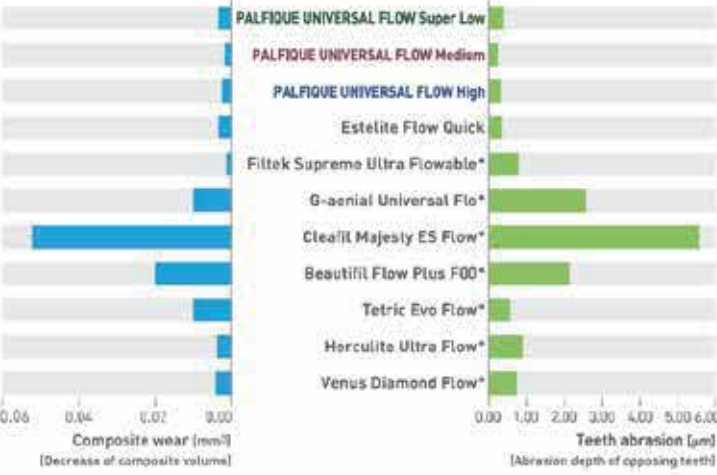
Excellent physical properties



Flexural Strength



Wear resistance



Product Packages Available

PALFIQUE UNIVERSAL FLOW - Resin-based Dental Restorative Material -

Super Low L-SYR
Contents: 1-1.8ml (3.0g) syringe, 10-tips
Available in 6 shades: A1, A2, A3, A3.5, A4, A5

Medium L-SYR
Contents: 1-1.3ml (3.0g) syringe, 10-tips
Medium SYRINGE
Contents: 1-1.0ml (1.7g) syringe, 6-tips
Available in 12 shades: CE, BW, A1, A2, A3, A3.5, A4, A5, B3, 0PA2, 0PA3, 0PA4

High L-SYR
Contents: 1-1.8ml (3.0g) syringe, 10-tips
Available in 7 shades: A1, A2, A3, A3.5, 0PA2, 0PA3, 0PA4

Accessory - TOKUYAMA Dispensing Tip / Contents: 50-tips - TOKUYAMA Plastic Tip / Contents: 50-tips - PALFIQUE UNIVERSAL FLOW Shade Guide

Related Product

PALFIQUE UNIVERSAL BOND - Self-cured Dental Universal Adhesive -



KIT
- PALFIQUE UNIVERSAL BOND BOND A / 5mL x 1
- PALFIQUE UNIVERSAL BOND BOND B / 5mL x 1
- Disposable Applicator (Fine) x 25
- Mixing Well x 1
- Disposable Mixing Well x 5



Refill
- PALFIQUE UNIVERSAL BOND BOND A / 5mL
- PALFIQUE UNIVERSAL BOND BOND B / 5mL
- Disposable Mixing Well / 50

Single Component Self-Etching Adhesive

PALFIQUE BOND



ESTHETIC AND RELIABLE BONDING

The 3D SR monomer, originally developed by Tokuyama Dental, creates integrity and a uniform bonding layer. PALFIQUE Bond employs the 3D SR monomer technology to provide a strong and durable adhesive strength, as well as less technique sensitivity and post-operative sensitivity. This is the advantage of a one component, self-etching bonding system which employs the 3D SR monomer. PALFIQUE Bond offers your practice esthetic and reliable bonding.

Features

PALFIQUE Bond has better operability, with the same high bond strength as the original TOKUYAMA BOND FORCE

- Short **10 second** application time
- Short **5 second** mild air dry
- Store at **room temperature** (0~25°C) for up to 2 years
- **5 minute** working time under a light blocking plate

PALFIQUE BOND

Simple Steps



Preparation



Apply PALFIQUE Bond



Leave for 10 sec., then
apply mild air for 5 sec.



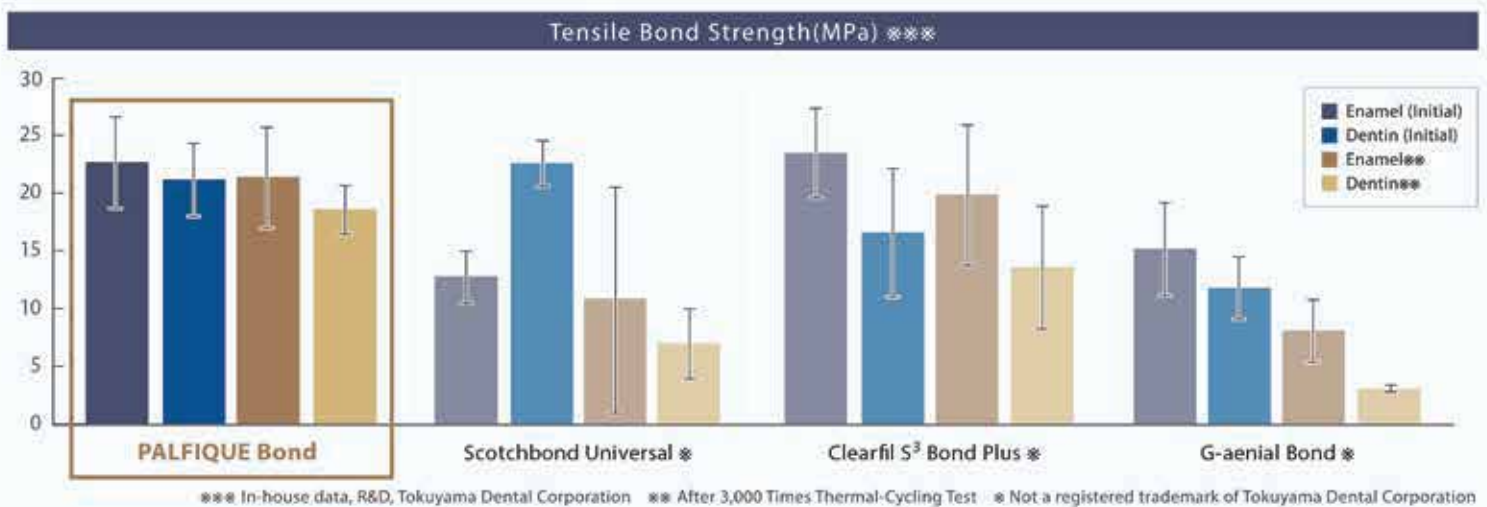
Light cure for 10 sec.



Final Restoration

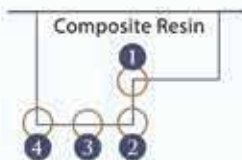
Case courtesy of Dr. Kazunori Otani

Assured Bond Strength (Strong and Durable)



Uniform, Thin and Strong Bonding Layer

PALFIQUE Bond provides a uniform, thin and strong bonding layer and shows the excellent adaptability to the cavity.



Product Packages Available



PALFIQUE Bond

Kit

- Bottle/5mL x 1
- Disposable Applicator (Superfine) x 25
- Dispensing Well x 1



PALFIQUE Bond

Refill

- Bottle/5mL x 1

ALL **PROCEDURES**
ALL **TECHNIQUES**
ALL **MATERIALS**

PALFIQUE UNIVERSAL BOND

SELF-CURED UNIVERSAL ADHESIVE



ALL PROCEDURES

SIMPLE HANDLING

No need to

wait after bond application

light-cure

apply separately for tooth and restorations

DIRECT RESTORATIONS AND INTRAORAL REPAIR OF RESTORATIONS WITH COMPOSITE RESIN



Composite Restoration



Intraoral Repair

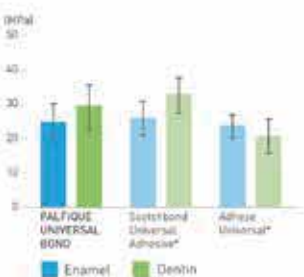


ALL TECHNIQUES

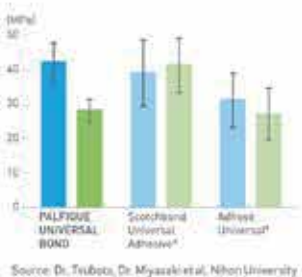
COMPATIBILITY with ALL ETCHING TECHNIQUES

PALFIQUE UNIVERSAL BOND can be used with Self-etch, Selective-etch and Total-etch techniques.

Shear Bond Strength to Tooth Self-Etch



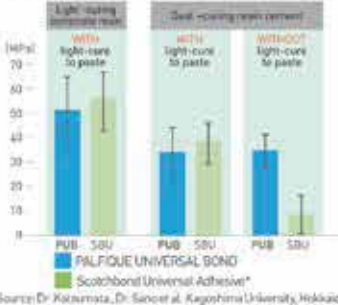
Shear Bond Strength to Tooth Total-Etch



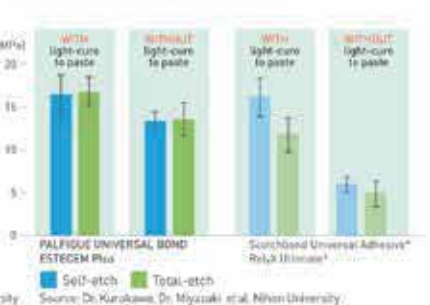
COMPATIBILITY with ALL COMPOSITE MATERIALS

PALFIQUE UNIVERSAL BOND is compatible with light-curing, dual-curing and self-curing composite materials for all direct and indirect restorations without the use of a separate activator.

Micro-tensile Bond Strength to Dentin



Shear Bond Strength to Dentin



PALFIQUE UNIVERSAL BOND is a adhesive system for both direct and indirect restorations that can be used with Self-etch, Selective-etch and Total-etch techniques. As a universal adhesive, PALFIQUE UNIVERSAL BOND has been designed to be fully compatible with light-cured, self-cured and dual-cured composite materials. PALFIQUE UNIVERSAL BOND also improves the bond strength of polymerizable resin material to all indirect restorative materials.

	PALFIQUE UNIVERSAL BOND	Scotchbond Universal Adhesive*	Adhese Universal*
Compatibility with all etching techniques	✓	✓	✓
Compatibility with dual- and self-cure compoiser	✓	▲*	✓
Can be used as a primer for prosthesis	✓	▲*	—

* Requires Dual Cure Activator unless it is used with Rely X Ultimate*

CEMENTATION OF INDIRECT RESTORATIONS



Cementation

Dr. Kazunori Otani

Zirconia crown and abutment treatment with PALFIQUE UNIVERSAL BOND

Final restoration with resin cement [ESTECM Plus]

Core Build-up

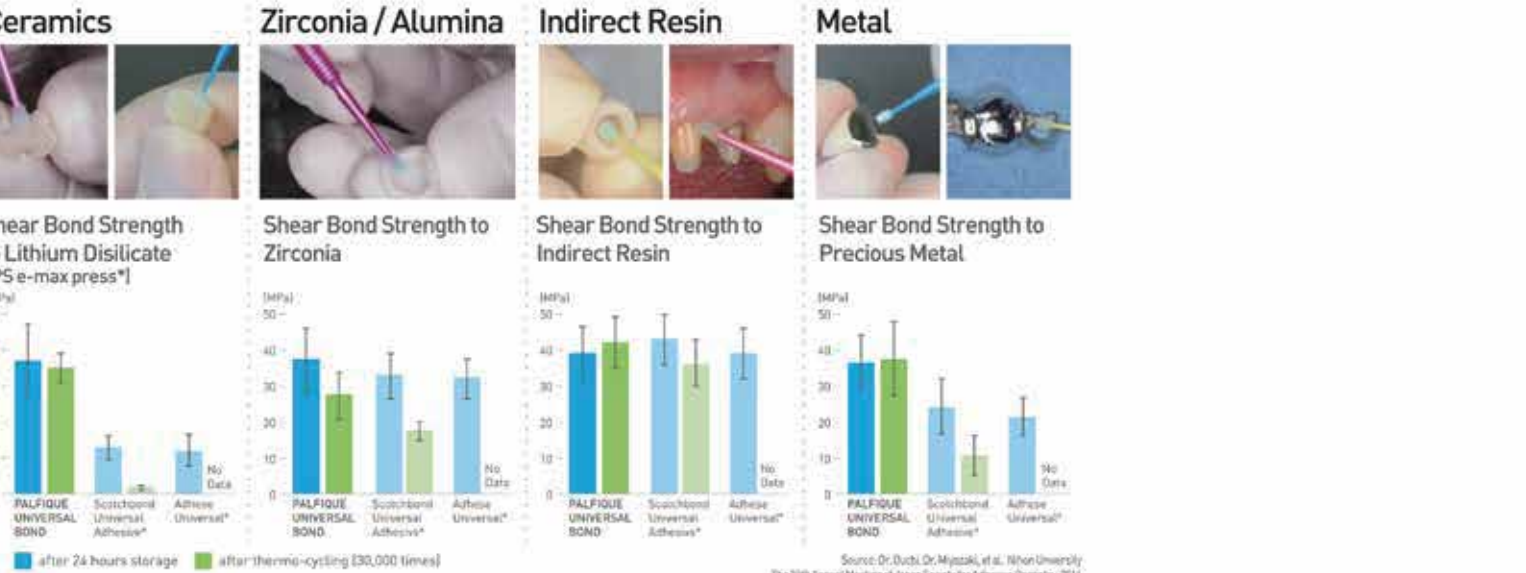
Dr. Keisuke Iwasaki

Fiber post and tooth treatment with PALFIQUE UNIVERSAL BOND

Core build-up with resin core

ALL MATERIALS

PALFIQUE UNIVERSAL BOND can adhere to any material as well as tooth without additional primers.



Source: Dr. Duchi, Dr. Miyazaki, et al. Nihon University. The 29th Annual Meeting of Japan Society for Adhesive Dentistry, 2016.

* Not a registered trademark of Tokuyama Dental Corporation

THE SCIENCE BEHIND UNIVERSAL

Tokuyama Dental's original technologies provide assured bond strength.

Adhesive Monomers

Methacryl group

CC(=C)OC(=O)R

Phosphate group

OP(=O)(O)O

R=Alkylene group (C2-C10)

3D-SR Monomer provides chemical bonding to tooth, zirconia, alumina and non-precious metal.

γ-MPTES reacts with glass ceramic surface.

CC(C)=COC(=O)O[Si](OCC)(OCC)OCC

Polymerization Catalyst

Borate Catalyst

R1R2R3R4B

R1-R4: Aryl group

Phosphoric Acid Monomer

Borane

R1R2R3B

Peroxide Co-Initiator

R1R2R3B + R1R2R3B -> R1R2R3B + R1R2R3B

R1• Radical

BoSE technology exhibits high catalytic activity under acidic conditions. A thin bonding layer formed after air blow becomes hard because of rapid progression of polymerization and curing on its adhesive interface (Contact Cure), when it comes into contact with resin materials.

MTU-6 interacts with precious metal.

CC(C)=COC(=O)O[Si](OCC)(OCC)OCC

PALFIQUE UNIVERSAL BOND

PALFIQUE UNIVERSAL BOND A

PALFIQUE UNIVERSAL BOND B

PACKAGE AVAILABLE

KIT

- PALFIQUE UNIVERSAL BOND BOND A / 5mL x 1
- PALFIQUE UNIVERSAL BOND BOND B / 5mL x 1
- Disposable Applicator (Fine) x 25
- Mixing Well x 1
- Disposable Mixing Well x 5

Refill

- PALFIQUE UNIVERSAL BOND BOND A / 5mL
- PALFIQUE UNIVERSAL BOND BOND B / 5mL
- Disposable Mixing Well / 50

RELATED PRODUCT

KIT (UNIVERSAL)

- PASTE (A/B) UNIVERSAL / each 2.3mL (each 4.7g) x 1
- PALFIQUE UNIVERSAL BOND BOND A / 5mL x 1
- PALFIQUE UNIVERSAL BOND BOND B / 5mL x 1
- Cement Mixing Tip x 15
- Mini Mixing Tip S x 5
- Nozzle for Mini Mixing Tip x 5
- Disposable Applicator (Fine) x 25
- Mixing Well x 1
- Disposable Mixing Well x 5

PASTE Refill

PASTE A/B each 2.3mL (each 4.7g) [UNIVERSAL, CLEAR, BROWN, WHITE OPAQUE]

Protective Sealant for Treatment of Hypersensitive Dentin

TOKUYAMA SHIELD FORCE *PLUS*



***Shields You from
Dentinal Hypersensitivity !***

- + Quick and Effective Treatment of Hypersensitive Dentin
- + Superior Sealing Effect
- + Durable Coating Effect
- + Simple Procedure

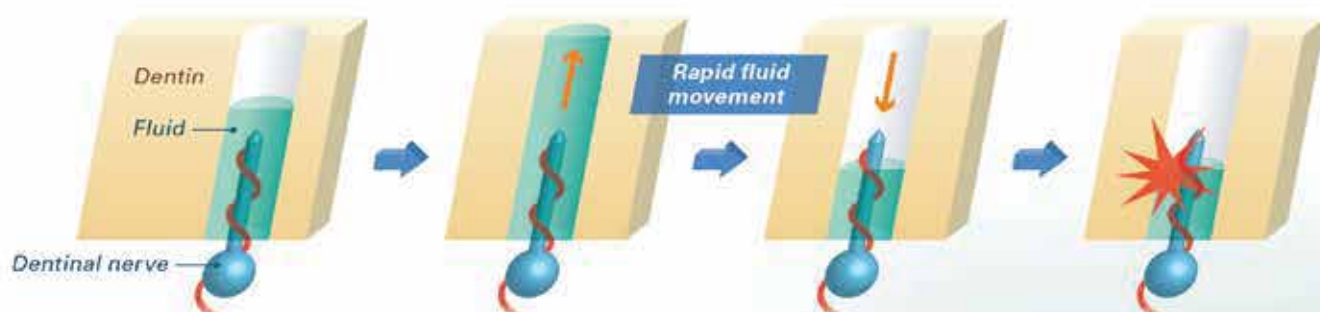


***Only One Application,
No Rinsing, No Rubbing Required.***

 Tokuyama Dental
30 / 52

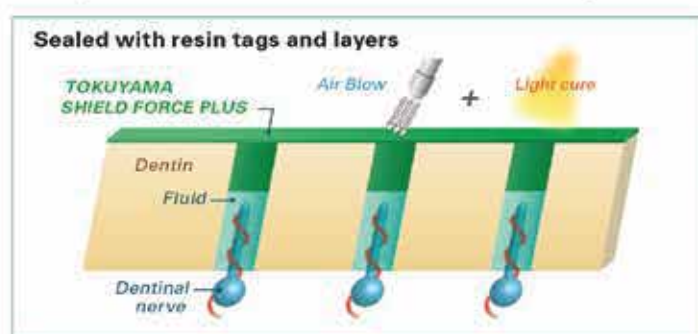
Mechanism of Hypersensitive Dentin

Dentin hypersensitivity is widely said to be caused by rapid fluid movement in the dentinal tubules.

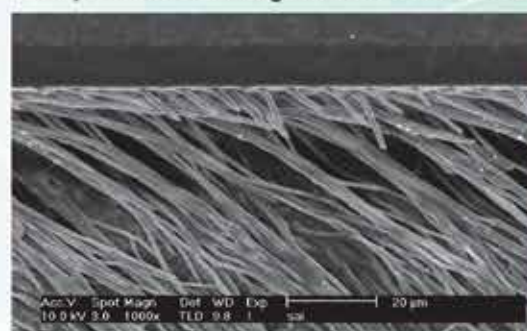


Sealing tubules with TOKUYAMA SHIELD FORCE PLUS

Applying TOKUYAMA SHIELD FORCE PLUS infiltrates and seals exposed dentinal tubules inhibiting the flow of fluid through the tubules which is the cause of sensitivity.



Firmly formed resin tags in dentinal tubules.



SEM image - Magx1000

** In-house data, R&D, Tokuyama Dental Corporation.
Note: This is a test model demonstrating hypersensitive dentin, using an extracted human tooth ground on the surface to expose the dentinal tubules.

Quick and Effective Treatment of Hypersensitive Dentin

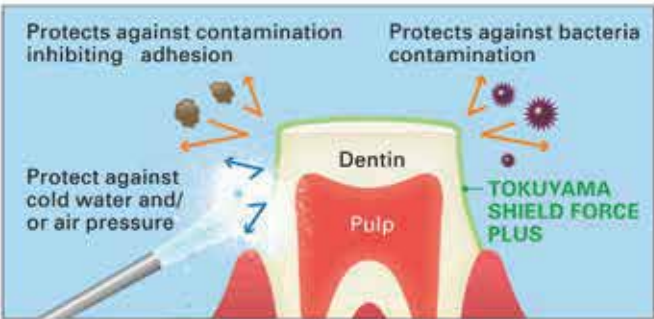
TOKUYAMA SHIELD FORCE PLUS reduces dentinal hypersensitivity immediately after applying, by utilizing Tokuyama's patented technology "Self Reinforcing Monomer (SR Monomer)" it interacts with the calcium ions sealing the dentinal tubules. The air drying step ensures the formation of a thin protective resin layer over the dentin surface and resin tags in the tubules, the final light curing step polymerizes them to solidify.

Clinical Procedure and Schematic Diagram of Self Reinforcing Technology



Superior Sealing Effect

When used in clinical cases under direct/in-direct restorations, TOKUYAMA SHIELD FORCE PLUS will alleviate and/or prevent tooth sensitivity caused by cold water and air pressure during the preparation, simultaneously protecting the tooth from bacteria and unexpected contamination to the dentin. Thanks to the superior sealing effect, TOKUYAMA SHIELD FORCE PLUS will also alleviate and/or prevent post operative sensitivity.



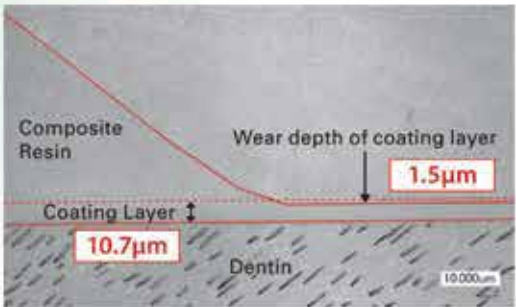
Durable Coating Effect

TOKUYAMA SHIELD FORCE PLUS is effective in reducing abrasion and/or erosion of exposed cervical dentin by creating a durable coating layer when light cured. Thanks to the Self Reinforcing Monomer it demonstrates significant durability against toothbrush abrasion regardless of the thin layer that is formed.

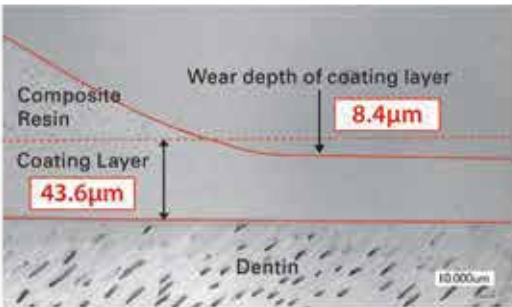


Toothbrush Abrasion Test (10,000 cycles)**

The layer of TOKUYAMA SHIELD FORCE PLUS exhibits only 1.5 µm of wear while Seal & Protect®* exhibits 8.4 µm of wear after the test.



TOKUYAMA SHIELD FORCE PLUS

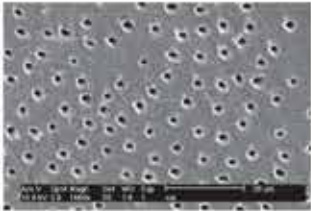


Seal & Protect®*

Thermal Cycle Test (10,000 cycles) 4°C - 60°C**

TOKUYAMA SHIELD FORCE PLUS

TOKUYAMA SHIELD FORCE PLUS layer remains over the dentin surface after the test.



Hypersensitive dentin model



After TOKUYAMA SHIELD FORCE PLUS is applied



After Thermal Cycle test (10,000)

Seal & Protect®*

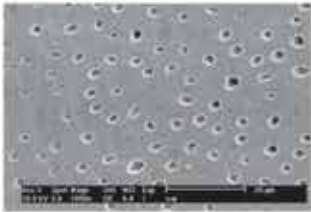
The layer of Seal & Protect®* has washed out and exposed dentin surface was observed after the test.



Hypersensitive dentin model



After Seal & Protect®* is applied



After Thermal Cycle test (10,000)

UNIVERSAL BONDING & DUAL-CURED ADHESIVE RESIN CEMENT

ESTECEM Plus

- Simple & Versatile Procedure
- Reliable Adhesion
- Superior Esthetics



PROCEDURE



1. Restoration and tooth pretreatment with PALFIQUE UNIVERSAL BOND



2. Apply the mixed PASTE to the surface of the restoration



3. Place the restoration on the tooth with firm pressure



4. Light-cure the excess PASTE with a dental curing light for 2 to 4 seconds



5. Remove the excess PASTE



6. Final PASTE hardening by light curing for 20 seconds or more
※ Light-cure along margins for 20 seconds or more in case of non translucent restoration



7. Finished restoration

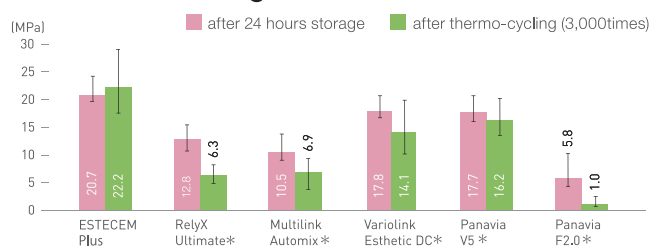
Case courtesy of Dr. Kazunori Otani

BONDING PERFORMANCE

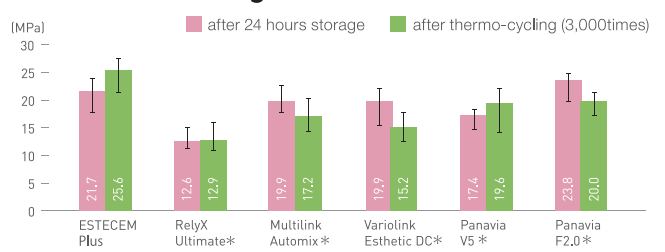


PALFIQUE UNIVERSAL BOND
PALFIQUE UNIVERSAL BOND promotes the adhesion of ESTECER Plus PASTE to both **tooth structure** and **all prosthetic materials** without the use of a separate primers.

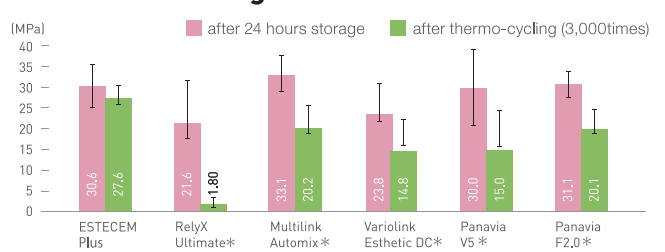
Tensile Bond Strength to Dentin **



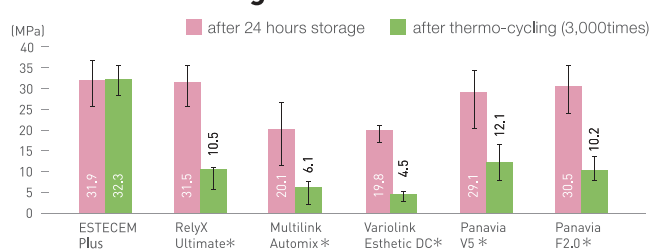
Tensile Bond Strength to Enamel **



Tensile Bond Strength to Ceramic **



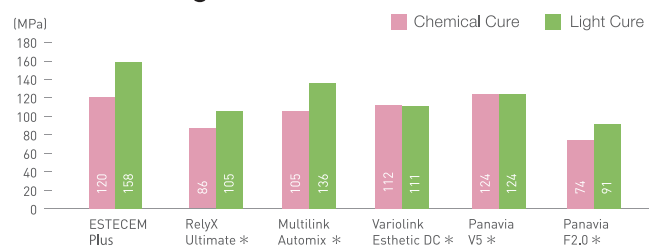
Tensile Bond Strength to Zirconia **



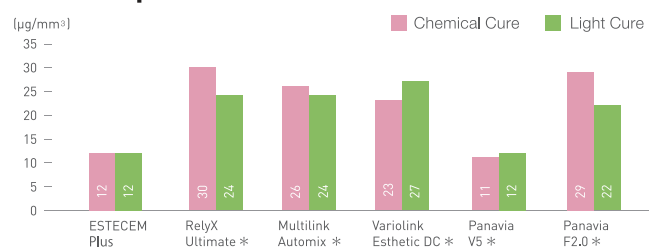
OPTIMIZED PROPERTIES FOR LONG-LASTING ESTHETICS

ESTECER Plus PASTE is designed high Flexural Strength, exceptional Water Sorption and Color Stability. The features can achieve Long-Lasting and Reliable Esthetics.

Flexural Strength **



Water Sorption **



Color Stability of Cement **

	Shade	Before test	After incubation in coffee solution (80°C/24h)	ΔE
ESTECER Plus	UNIVERSAL			4.6
RelyX Ultimate *	A1			8.8
Multilink Automix *	YELLOW			11.0
Variolink Esthetic DC *	LIGHT			19.8
Panavia V5 *	UNIVERSAL			12.5
Panavia F2.0 *	LIGHT			11.8

* Not a registered trademark of Tokuyama Dental Corporation **In-house data, R&D, Tokuyama Dental Corporation

PACKAGE AVAILABLE



Kit (Universal)

- PASTE (A/B) Universal/each 2.3mL(each 4.7g)
- PALFIQUE UNIVERSAL BOND BOND A / 5mL
- PALFIQUE UNIVERSAL BOND BOND B / 5mL
- Cement Mixing Tip
- Mini Mixing Tip S

- x 1
- x 1
- x 1
- x 15
- x 5
- Nozzle for Mini Mixing Tip x 5
- Disposable Applicator (Fine) x 25
- Mixing Well x 1
- Disposable Mixing Well x 5

Refill

- PASTE A/B each 2.3mL (4.7g)
- (UNIVERSAL, CLEAR, BROWN, WHITE OPAQUE)
- PALFIQUE UNIVERSAL BOND KIT (A/B) / 5mL x 2
- PALFIQUE UNIVERSAL BOND BOND A / 5mL
- PALFIQUE UNIVERSAL BOND BOND B / 5mL
- Cement Mixing Tip / 40
- Mini Mixing Tip S / 40
- Nozzle for Mini Mixing Tip / 40
- Disposable Mixing Well / 50

SHADE AVAILABLE



Specifications are subject to change without notice based on Manufacturers discretion.

Manufactured by
Tokuyama Dental Corporation

38-9,Taitou 1-chome,Taitou-ku,Tokyo,Japan

TEL: +81-3-3835-2261 FAX: +81-3-3835-2265

Email: export-2@tokuyama-dental.co.jp

URL: www.tokuyama-dental.com

Resin based Dental Restorative Material

ESTELITE POSTERIOR

QUICK-CURE

ESTELITE POSTERIOR, developed for optimal posterior restorations allows you to place dependable restorations with ideal handling, reliable physical strength and quick curing properties (10 seconds). By implementing Tokuyama's patented innovative initiator system "Radical Amplified Photopolymerization (RAP) Technology" **ESTELITE POSTERIOR** offers the clinician a reduced curing time without sacrificing working time.



Benefits

Designed for Optimal Posterior Restorations.

- Ideal handling
 - Optimal stiffness, easy to shape, non-sticky
- Prominent physical strength
 - High flexural and compressive strength
- Exclusive posterior shade availability
 - PA1, PA2, PA3, PCE (Clear Enamel)
- Quick curing time
 - 10 seconds with a halogen light ($\geq 400\text{mW/cm}^2$)
- Ample working time
 - 50 seconds under an ambient light (10,000 lx)

Indications

- Direct posterior restorations (including the occlusal surface)
- Repair of porcelain/composite

Before



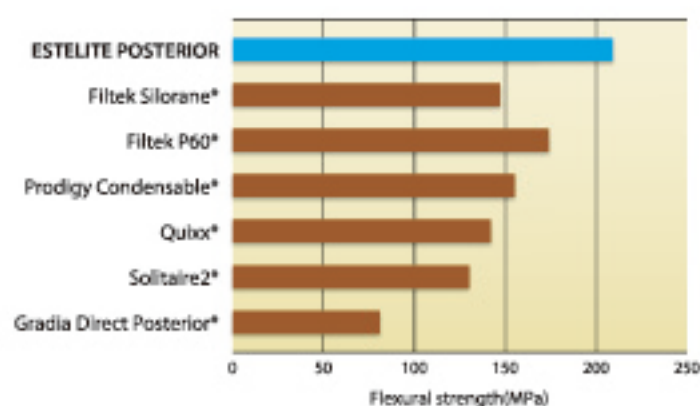
After



Case courtesy of Kazunori Otani, DDS

Excellent Physical Properties

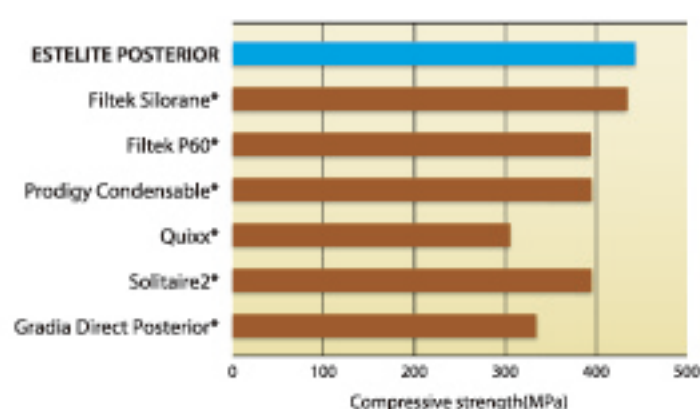
Flexural Strength**



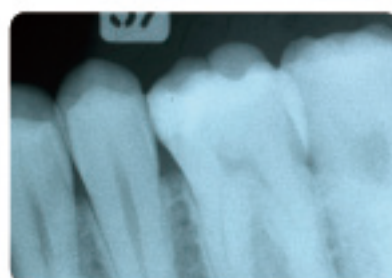
Flexural Strength**	209 MPa
Compressive Strength**	443 MPa

Irradiation Time for polymerization (refer to instructions)	Halogen 800mW/cm ²	5-10 sec.
	Plasma 950mW/cm ²	3 sec.
	LED 900mW/cm ²	5-10 sec.

Compressive Strength**



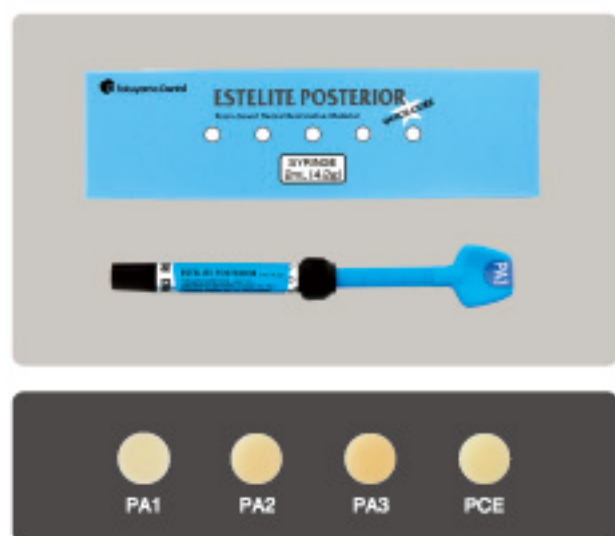
Excellent (290% AI) Radiopacity



** Source: Tokuyama Dental R&D

* Not a registered trademark of Tokuyama Dental Corporation.

Packaging Availability



ESTELITE POSTERIOR Refills in Syringe only

ESTELITE POSTERIOR Syringe Refill

Contents: 1 syringe (4.2g)

Available shades: PA1, PA2, PA3, *PCE

*PCE (Clear Enamel) is designed for the top surface of posterior restorations.

Specifications are subject to change without obligation on the part of the Manufacturer

Manufactured by

Tokuyama Dental Corporation

38-9, Taitou 1-chome, Taitou-ku, Tokyo, Japan

TEL: +81-3-3835-2261 FAX: +81-3-3835-7224

Email: export@tokuyama-dental.co.jp

URL: www.tokuyama-dental.com

Glass Ionomer Cement For Luting

TOKUSO IONOMER LUTING CEMENT



An excellent mixability, a sharp hardening property and an extremely thin film thickness achieves a superior cementation.

37 / 52

A Light and Smooth Mixing.

The smooth setting achieves the excellent physical properties required by the clinic.

Easy to mix with an excellent high fluidity of liquid

The best properties of cement can be achieved by mixing the powder and liquid at the standard powder / liquid ratio. It is hard for conventional cements to achieve ideal properties because of their low fluidity of liquid and inaccurate measuring spoons. Because of the high fluidity of liquid in TOKUSO IONOMER, it is easy to mix at the standard powder / liquid ratio, thus ensuring excellent properties as a luting cement should.

■ Mixability



Smooth mixing



High fluidity

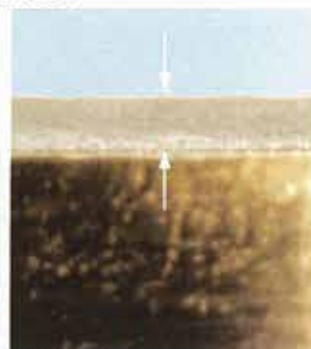
It achieves a film thickness of 16 microns

Because of the high fluidity of the mixed material and the fine powder, a film thickness as thin as 16 microns can be achieved. Thus, TOKUSO IONOMER achieves an excellent adaptation for the luting of prostheses.

■ Comparison of film thickness



TOKUSO IONOMER



BRAND A



Sharp hardening reduces the influence of water

The high fluidity of TOKUSO IONOMER allows for easy application to teeth, prostheses and a smooth setting. It allows enough working time and hardens quickly after the setting of the prostheses. Hardening is difficult to be influenced by water. The smooth setting achieves the excellent physical properties required at the clinic.

Low collapsing

Because of its ability to limit collapsing in water, there is not a need to worry about the looseness of the prostheses or secondary caries. The high marginal sealing ensures the retaining of the prosthesis for a long time in the cavity.

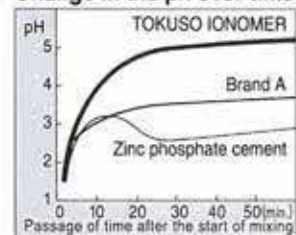
High adhesive strength

Its high adhesive strength and mechanical strength achieves an excellent cementation between the teeth and the prosthesis.

Less harmful effect to the pulp

TOKUSO IONOMER is designed to minimize the harmful effects to the pulp in addition to the high affinity with human tissue as Glass Ionomer Cement, thus making it easy to be used as a luting cement.

Change in the ph over time



Excellent radiopacity

It is easy to diagnose even a interdental space after the clinical procedure with its excellent radiopacity.

Radiopacity



Glass Ionomer Cement For Luting
TOKUSO IONOMER LUTING CEMENT



Usage:

Luting inlay, crown and bridge, or attaching of an orthodontic band. Cavity lining or primary teeth filling.

Package:

- Set Powder : 36g
 Liquid : 20g
 Powder Measuring Spoon 1
 Mixing Pad 1 Set
 Spatula 1

Note:

- 1) Be sure to tightly close both the powder and liquid bottles after using, and store them in a cool and dry area.
- 2) Keep the nozzle of the bottle separate from the mixing pad when dropping the liquid in order to measure the liquid accurately.
- 3) Be careful not to allow any bubbles to occur while dropping the liquid.
- 4) Wipe any residue liquid attached to the nozzle of the bottle with a wet gauze etc.
- 5) Avoid mixing the powder or liquid of other brands with those of TOKUSO IONOMER.
- 6) Keep all zinc oxide eugenol away, because it will prevent the hardening of TOKUSO IONOMER.

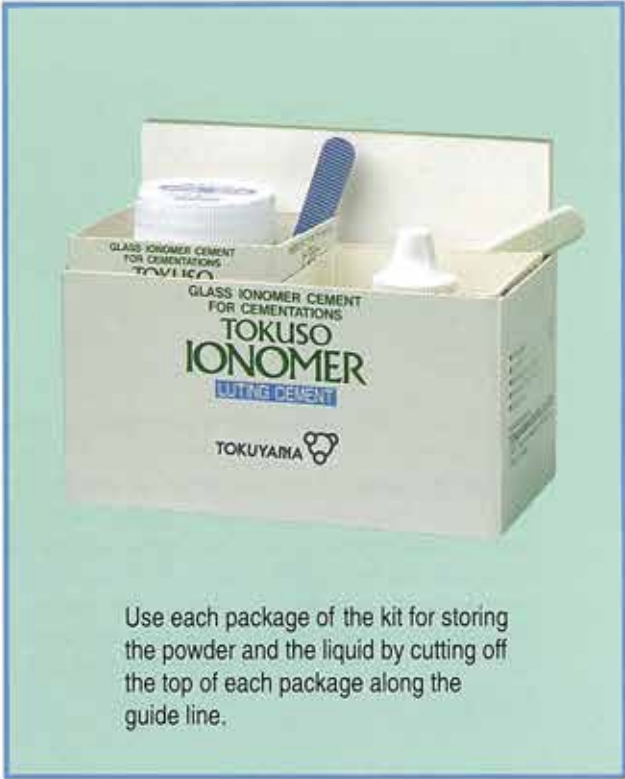
Technical Information

Powder / Liquid ratio	1.7	1.9 (Standard P/L ratio)	2.1
Hardening time (Minutes *Seconds)	4' 30"	4' 10"	3' 40"
Compressive strength (MPa)	157 (5)	169 (7)	172 (9)
Thickness of film	15	16	19
Collapsing ratio	0.29	0.28	0.27
Adhesive strength to enamel (MPa)	4.2 (0.7)	5.8 (0.8)	5.9 (1.0)
Adhesive strength to dentin (MPa)	3.6 (0.5)	3.6 (0.7)	3.7 (0.8)

() = Standard Deviation Measured by Tokuyama Soda Tsukuba Laboratory

Standard Powder / Liquid ratio

- Powder : 1 measuring spoon provided (1.9g)
Liquid : 2 drops (1.0g)
Change the viscosity of the mixed material by adjusting the amount of powder in case the measurement is not standard.



Specifications are subject to change without notice and without obligation on the part of the Manufacturer.

20020820

Manufacturer
Tokuyama Dental Corporation

38-9, Taitou 1-chome, Taitou-ku, Tokyo 110-0016, Japan
TEL: +81-3-3835-2261 FAX: +81-3-3835-7224

Rebase II

25 years of a top quality hard denture reline

Purchase yours Today!



Rebase II

Chairside Hard Denture Reline Material



42 / 52

Features and Benefits

Awards and Recognition

- Dental Advisor preferred product
- Current Hard Denture Reline Market Leader
- First Introduced in 1988: 25 years of being a top product



Main Features & Benefits

- One-appointment procedure (saves lab cost!)
- Easy to use
- Outstanding polishability and handling
- Low heat generation
- Minimal taste and odor
- High durability
- Accurate adaptation of the denture
- Resin hardener cures top layer avoiding development of pores and bacteria build up



Source: Q1 2013 SDM Data

Doctors' Testimonials

"Tokuyama Rebase II produces a creamy resin that flows where you want it but stays put, as well. It has no smell. It doesn't sting. It doesn't burn. It has no taste. It's really amazing stuff... Patients don't complain like they used to with traditional acrylic chairside reline materials. This stuff is a pleasure to work with. And, the resulting reline is very homogenous, dense, and blends in nicely with the old denture acrylic. And, the fit is exquisite! I promise you'll be impressed" **Dr. Mike Barr**

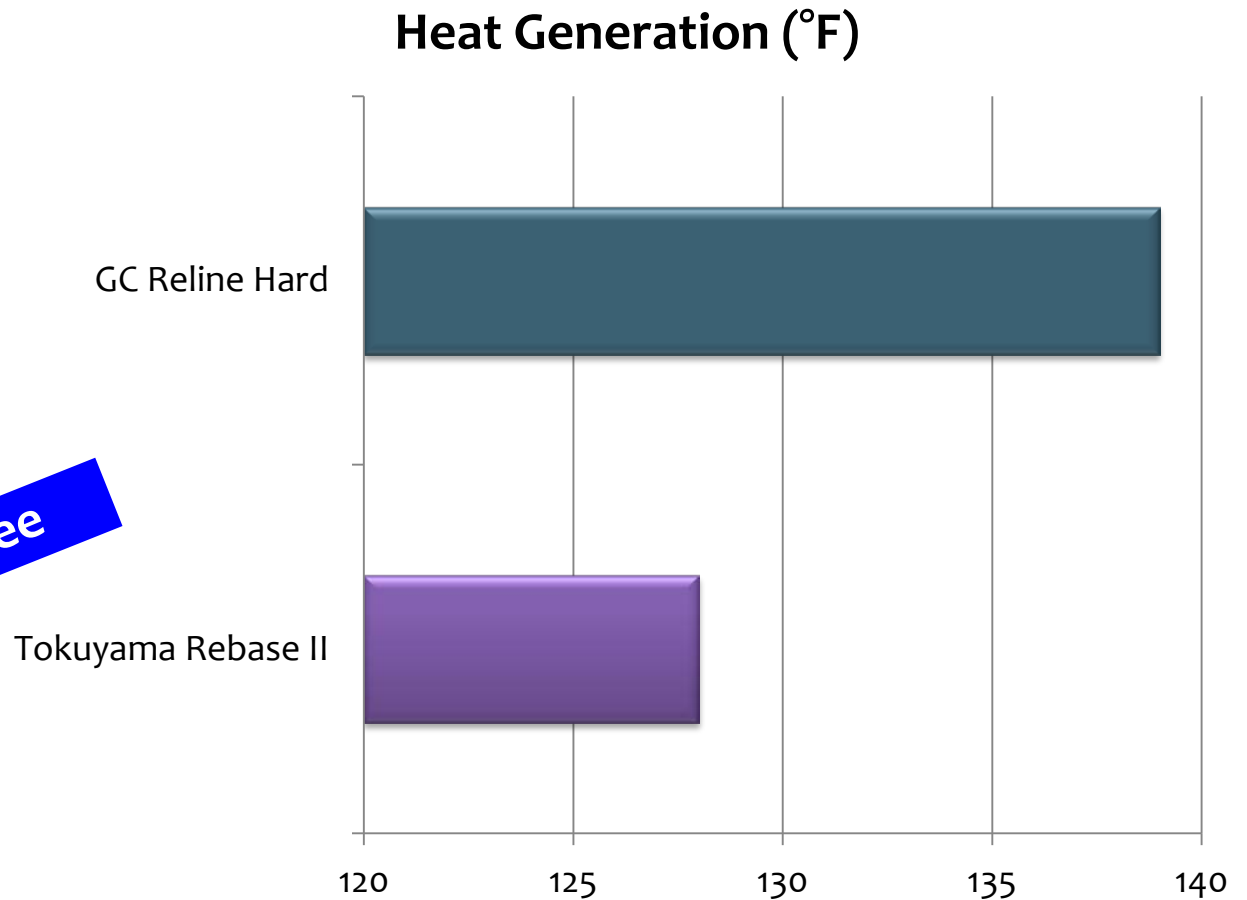
"I love this product because it is easy to work with and manipulate also patients don't feel uncomfortable or complain." **Dr. Emmanuel Harton**

"Rebase II provides excellent esthetics, to match the natural acrylic denture. It mixes easily, and my patients love that I can do this chairside." **Dr. Bob Margeas**

Low Heat Generation

- Minimal heat generation during intraoral setting
- More comfortable for the patient

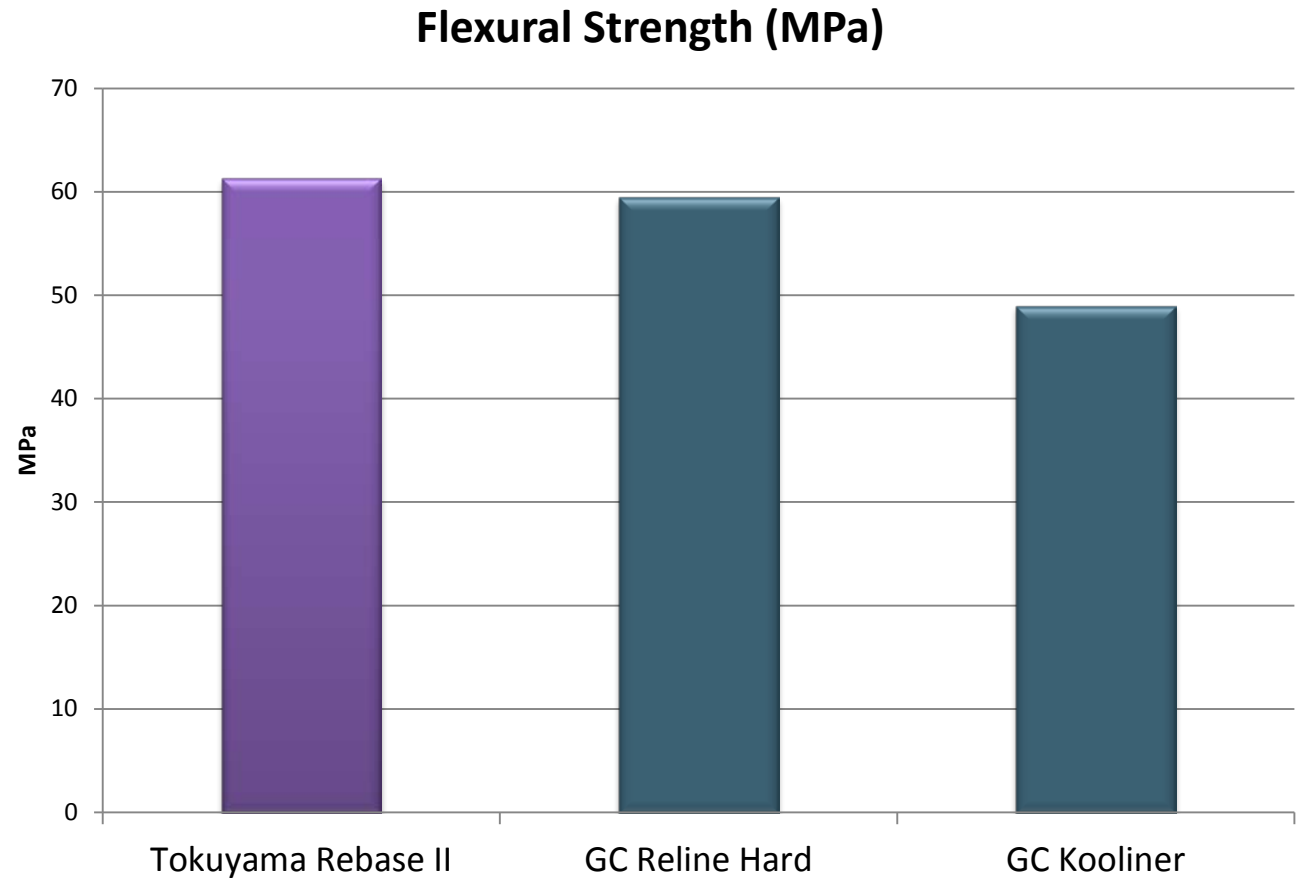
Methyl Methacrylate Free



Source: Tokuyama Dental R&D

Superior Flexural Strength

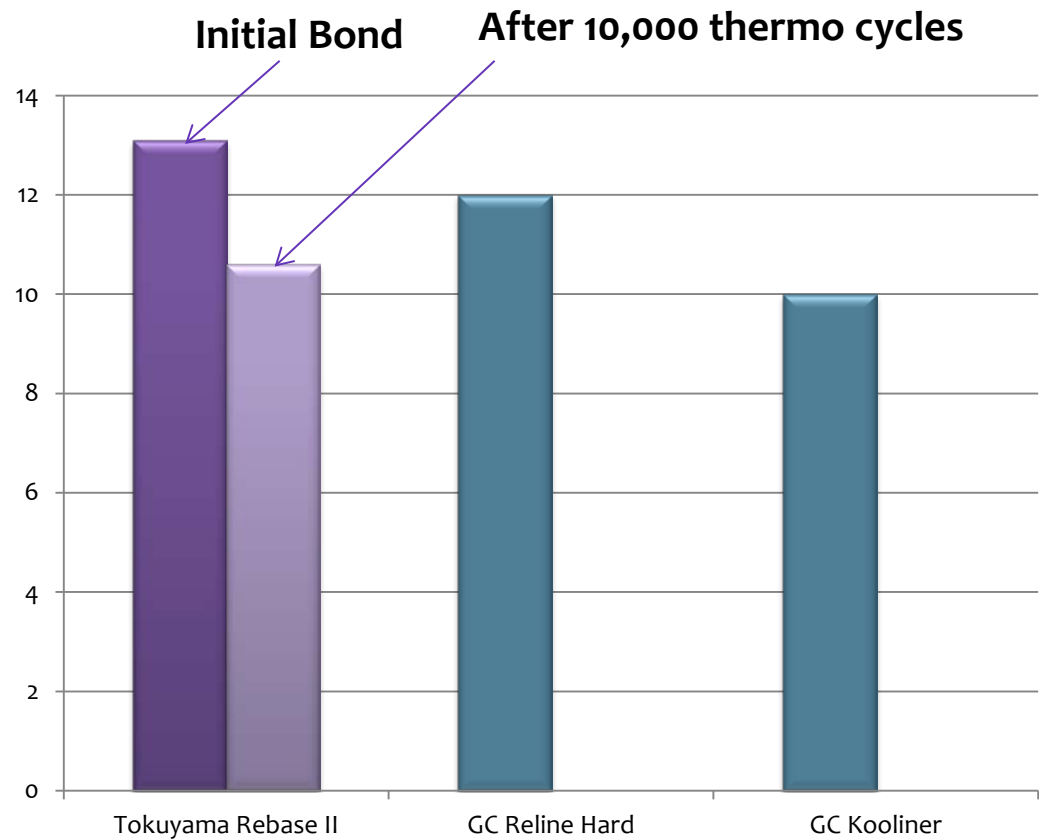
- Superior flexural strength



Source: Tokuyama Dental R&D

Bond Strength

- Creates an immediate strong bond between the denture and reline
- After 10,000 thermo cycles the bond strength remains high



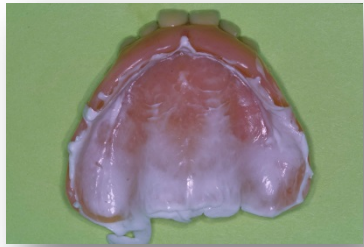
Source: Tokuyama Dental R&D

Procedure



48 / 52

Directions for Use



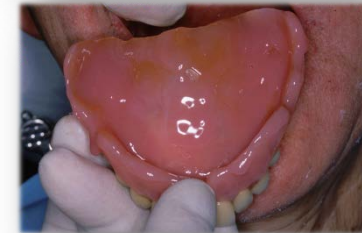
- Check adaptation or fit



- Apply to denture



- Removal of denture surface



- Insert denture in mouth



- Application of adhesive
 - Apply 2 or 3 coats
 - Air dry if needed



- Remove excess resin

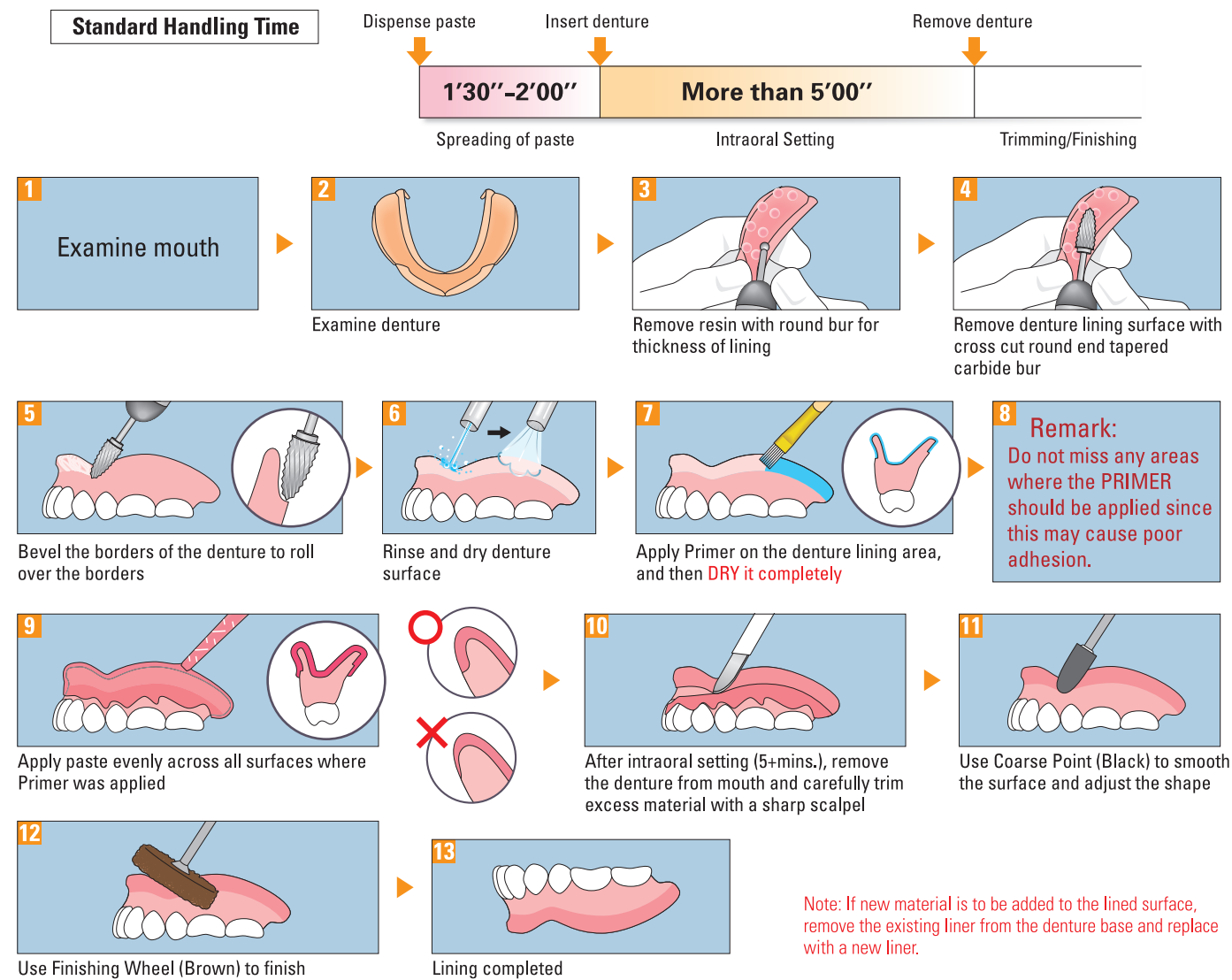


- Measure and Mix Powder/ Liquid
 - Mix 5-10 seconds



- Remove the denture

Handling Procedure (Intraoral Lining Method)



Available Products

SOFRELINER TOUGH S Soft

For both Short and Long Term Use
Soft Relining Material

Cartridge Paste (base/catalist each 26g) x 1
Primer 10mL x 1
Drip-Cap for Primer x 1
Plastic cup x 1

Mixing tip XS x 10
Spatula x 1
Brush x 1
Coarse point (Black) x 1
Finishing wheel (Brown) x 1



SILICONE REMOVER

Agent for Removing Silicone-based Reliner from Acrylic Denture

Bottle 7mL x 1



SOFRELINER TOUGH M Medium

For Long Term Use Soft Relining Material

Cartridge Paste (base/catalist each 27g) x 1
Primer 10mL x 1
Drip-Cap for Primer x 1
Plastic cup x 1
Mixing tip XS x 10

Spatula x 1
Brush x 1
Shape adjustment point (White) x 1
Finishing point (Brown) x 1



TOKUYAMA DISPENSER II

Cartridge Type Mixing Dispenser

Dispenser x 1



Silicone-based soft denture liner

SOFRELINER TOUGH S Soft

Long Lasting Comfort for Denture Patients.



With SOFRELINER TOUGH S you can expect the relined denture surface to remain Soft, Smooth, with Less-Discoloration and Less-Odor.



Denture lining for long-term use

to relieve pain caused by sharp ridges
to improve denture retention

Temporary relining

for tissue conditioning

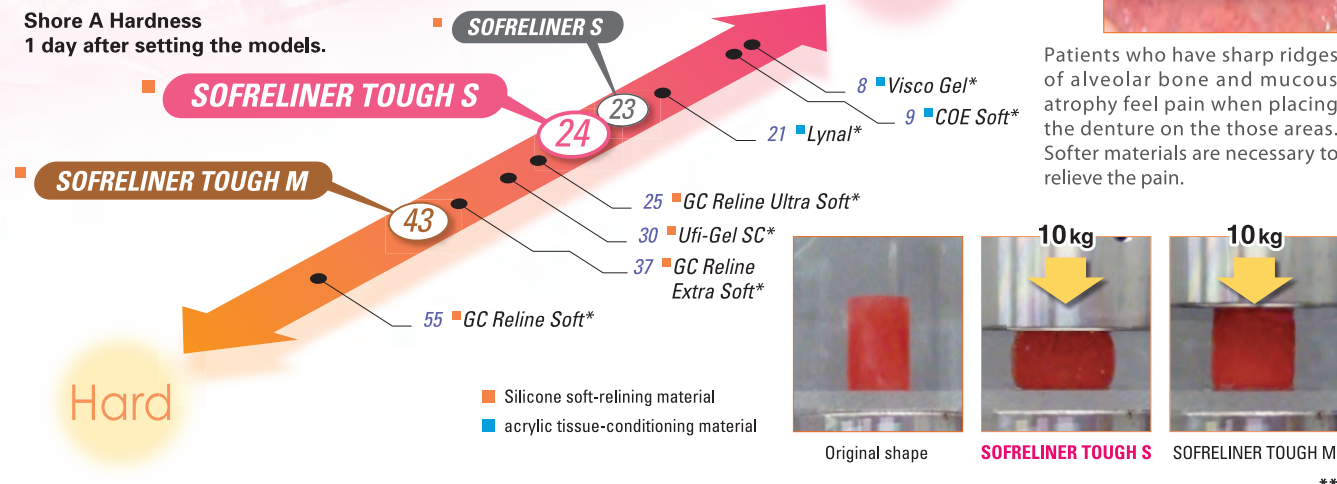


Tokuyama Dental

SOFRELINER TOUGH S vs. conventional Soft-Relining Materials

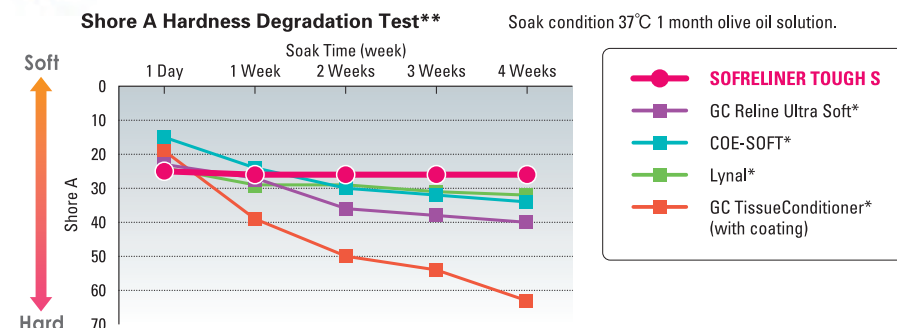
One of The Softest Silicone Relining Material

The Shore-A hardness of Tough S is almost the same as acrylic tissue-conditioning, enabling the material to alleviate pain caused by sharp ridges of alveolar bone and mucous atrophy and/or tissue conditioning. SOFRELINER TOUGH S has long lasting softness, enabling a long term relining with minimum degradation as well as a short term tissue conditioning.



For Temporary Relining & Tissue Conditioning

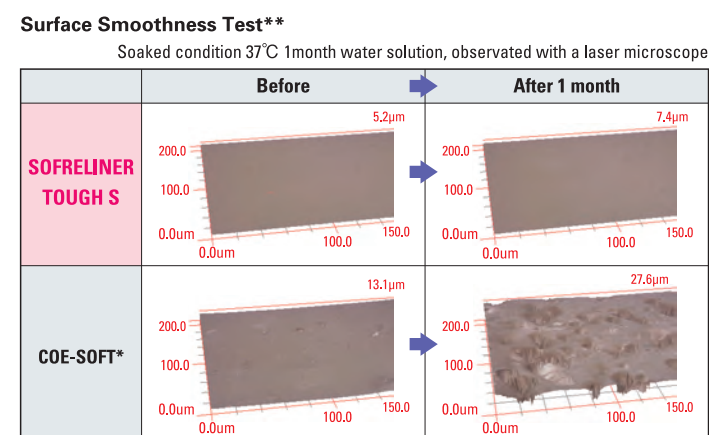
Maintained Softness



Generally acrylic tissue-conditioning materials change softness gradually hardening and the surface becomes rough. Due to its chemical function the surface would need to be relined for better patient comfort. SOFRELINER TOUGH S is a silicone soft-relining material and it maintains its softness and surface smoothness, additional relining will not be necessary.

Lasting Smoothness / Less-Odor

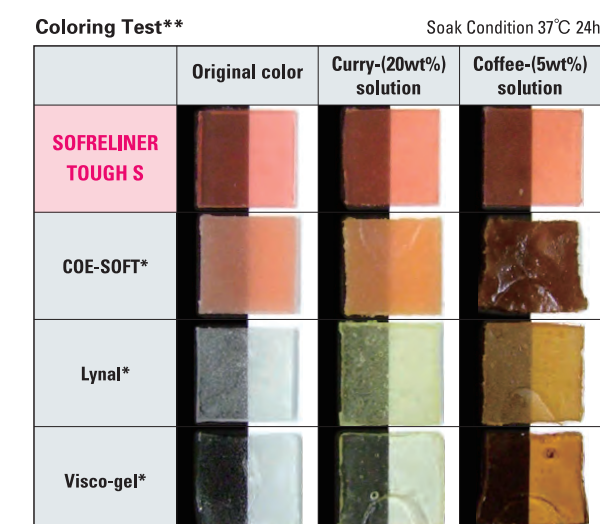
SOFRELINER TOUGH S is a silicone soft-relining material that maintains its surface smoothness after a 4 week water-soak test; helping to alleviate contamination and odor caused by daily oral use. On the contrary, acrylic tissue conditioning materials lose the surface smoothness after the same 4 week test.



Note: Daily cleaning of the relined denture surface with a sponge or oxigenat-ing denture (e.g. Polident, etc.) is recommended for SOFRELINER TOUGH S.

Less-Discoloration

SOFRELINER TOUGH S is a silicone soft-relining material that has high resistance to discoloration compared to acrylic tissue-conditioning materials. Due to this characteristic, SOFRELINER TOUGH S will maintain its original colors longer.



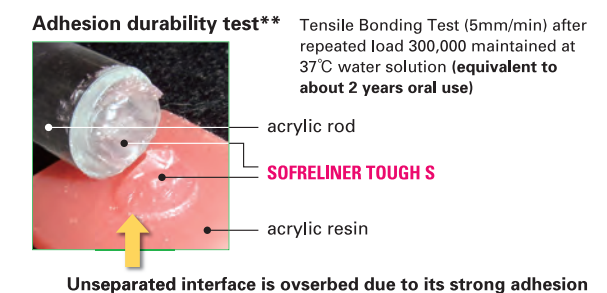
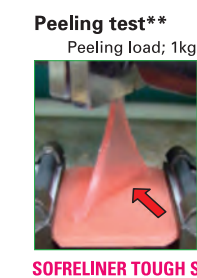
SOFRELINER TOUGH S Soft

Soft Lining for Long-Term Use.

Assured Durability

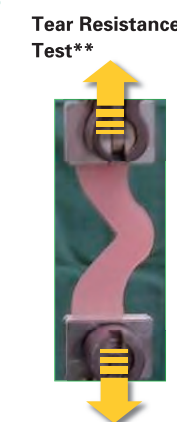
Strong Adhesion

SOFRELINER TOUGH S Primer offers high adhesion strength, enabling long lasting adhesion and reduced peeling at the denture border. The adhesion durability test shows excellent adhesion maintaining the interface unseparated.

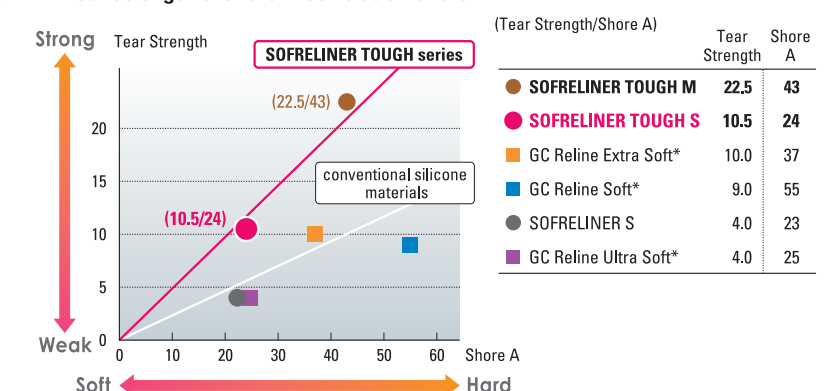


High Tear Resistance

SOFRELINER TOUGH S has a high tear resistance when compared to other silicone relining materials with softness in the Shore -A 24 hardness range, this physical property will reduce the risk of tearing during daily use of the denture.



Tear Strength & Shore A Correlation Chart**



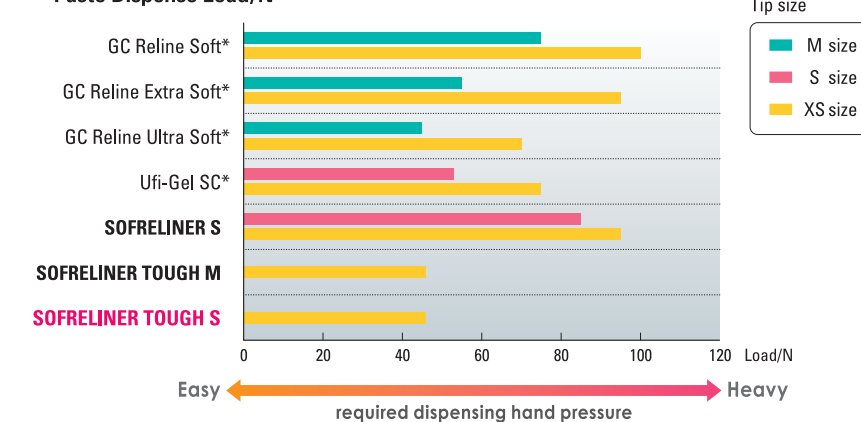
Easy Handling to Improve Denture Lining Procedure

Smooth Auto-Dispensing

SOFRELINER TOUGH S is an auto-mix system requiring minimum hand pressure to dispense the mixed paste. Due to its consistency the paste is easily dispensed from the cartridge using a XS size mixing tip, leaving less material in the tip, minimizing product waste.



Paste Dispense Load/N**



Small Tips, Minimum Waste



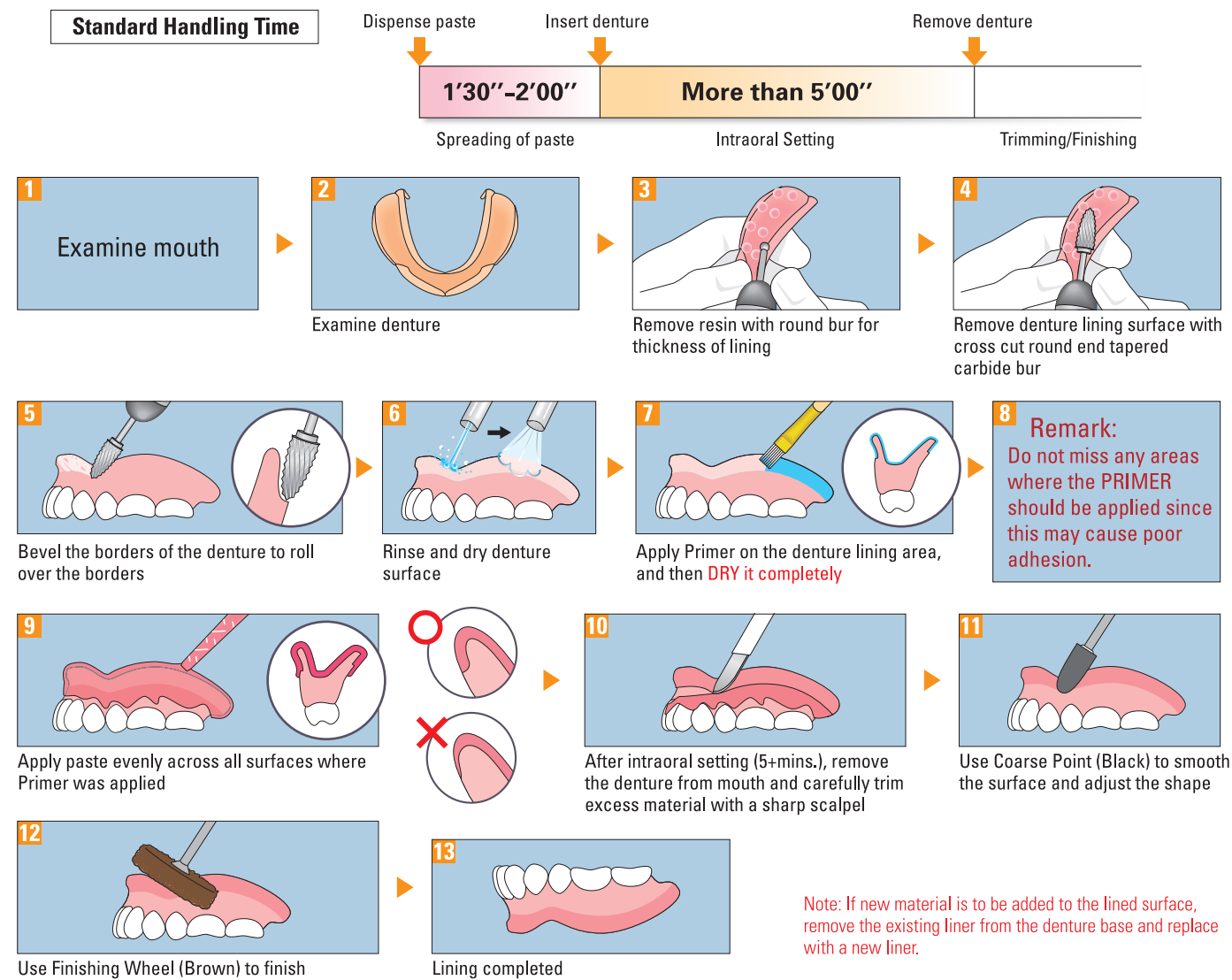
Easy Removal

SOFRELINER TOUGH S is easily removed with SILICONE REMOVER (sold separately), enabling your clinical reline to be fast and smooth.



*Not a registered mark of Tokuyama Dental Corporation.
** In-house data, R&D, Tokuyama Dental Corporation.

Handling Procedure (Intraoral Lining Method)



Available Products

SOFRELINER TOUGH S Soft

For both Short and Long Term Use
Soft Relining Material

Cartridge Paste (base/catalist each 26g) x 1	Mixing tip XS x 10
Primer 10mL x 1	Spatula x 1
Drip-Cap for Primer x 1	Brush x 1
Plastic cup x 1	Coarse point (Black) x 1
	Finishing wheel (Brown) x 1



SOFRELINER TOUGH M Medium

For Long Term Use Soft Relining Material

Cartridge Paste (base/catalist each 27g) x 1	Spatula x 1
Primer 10mL x 1	Brush x 1
Drip-Cap for Primer x 1	Shape adjustment point (White) x 1
Plastic cup x 1	Finishing point (Brown) x 1
Mixing tip XS x 10	



SILICONE REMOVER

Agent for Removing Silicone-based Reliner from Acrylic Denture



TOKUYAMA DISPENSER II

Cartridge Type Mixing Dispenser



Silicone-based soft denture liner

SOFRELINER TOUGH S Soft

Long Lasting Comfort for Denture Patients.



With SOFRELINER TOUGH S you can expect the relined denture surface to remain Soft, Smooth, with Less-Discoloration and Less-Odor.

Denture lining for long-term use

to relieve pain caused by sharp ridges
to improve denture retention

Temporary relining

for tissue conditioning



Tokuyama Dental